



Open Water Spearing In Northern Wisconsin by Chippewa Indians During 2016

by

**Kia Hmielewski
Inland Data Manager**

**Administrative Report 18-01
November 2018**

**Great Lakes Indian Fish & Wildlife Commission
Biological Services Division
P.O. Box 9
Odanah, WI 54861
(715) 682-6619
www.glifwc.org**

ABSTRACT

The year two-thousand sixteen (2016) marked the thirty-second consecutive spring that spear fishing was conducted by Chippewa tribes in off-reservation waters of northern Wisconsin. A total of 531 tribal members participated in this traditional fishery. Spearing for walleye occurred on 185 lakes and walleye were harvested from all except 7 lakes. A total of 33,542 fish were taken with 97.2% of the catch (32,617 fish) being walleye. Numbers of other gamefish harvested were 284 muskellunge, 242 bass, 62 northern pike, and 2 lake sturgeon. Average lengths were 15.7 inches for walleye and 39.1 inches for muskellunge. The tribal walleye quota was exceeded on 3 lakes by a total of 8 fish. On the remaining lakes, harvest of walleye and muskellunge was maintained within the established limits by a nightly permit system and complete monitoring of the catch. During 2016 fyke-netting occurred in one river segment and four lakes in spring. Gill-netting occurred in one lake after June 1. Also, spearing occurred in four lakes during fall.

TABLE OF CONTENTS

	PAGE
LIST OF TABLES	iii
LIST OF FIGURES	iv
INTRODUCTION	1
Regulations	1
Permit System and Monitoring	1
RESULTS AND DISCUSSION	4
Fishing Effort	4
Number of Spearers.....	4
Number of Spearer-nights or Permits Used	6
Number of Boat-hours	8
Total Harvest	10
Walleye Harvest	11
Mean Length	12
Sex Composition of Catch	13
Catch Per Effort (CPE)	14
Muskellunge Harvest	16
Bass Harvest	18
Northern Pike Harvest	19
Sturgeon Harvest	20
Lake Fyke and Dip Netting	20
Gill Netting	20
Fall Spearing	20
LITERATURE CITED	22
ACKNOWLEDGMENTS	22
LIST OF APPENDICES	23

LIST OF TABLES

TABLE		PAGE
1	Number of spearers on lakes selected by six Wisconsin Chippewa bands during spring spearing from 2000-2016	4
2	Number of spearer-nights on lakes selected by six Wisconsin Chippewa bands during spring spearing from 2000-2016	6
3	Number of spearer boat-hours on lakes selected by six Wisconsin Chippewa bands during spring spearing from 2000-2016	8
4	Number of interviews and average length of spearing trip (in boat-hours) during spring spearing from 2000-2016	9
5	Number of various fish species harvested during spring spearing seasons from 2009-2016	10
6	Number of lakes with tribal walleye quota, spearing effort, and harvest plus percent of overall quota harvested from 2000-2016	11
7	Number and percent of male, female, and unknown walleye that were sexed during spring spearing seasons from 2000-2016	13
8	Range and average catch rates for walleye in lakes speared during spring spearing seasons from 2000-2016	15
9	Number of lakes with tribal muskellunge quota, harvest, and percent of overall quota harvested from 2000-2016	16
10	Effort and harvest during spring fyke/dip netting and fall spearing in 2016	21
11	Gill net effort and harvest after June 1, 2016	22

LIST OF FIGURES

FIGURE		PAGE
1	Map depicting the ceded territory in northern Wisconsin	2
2	Off-reservation Treaty Fishing Permit used during the 2016 open-water season	3
3	Number of spearers during spring spearing seasons from 2000-2016	5
4	Number of spearer-nights during spring spearing seasons from 2000-2016	7
5	Number of boat-hours of effort during spring spearing seasons from 2000-2016	9
6	Number of walleye and percent of quota harvested during spring spearing seasons from 2000-2016	12
7	Length frequency of walleye speared during 2016 and during the thirty-two year period 1985-2016	12
8	Sex composition of the walleye harvest during spring spearing seasons from 2000-2016	14
9	Walleye CPE (number per boat-hour) by lake during the 2016 spring spearing season	15
10	Number of muskellunge harvested during spring spearing seasons from 2000-2016	17
11	Length frequency of muskellunge speared during 2016 and during the thirty-one year period 1985-2016	17
12	Number of bass harvested during spring spearing seasons from 2000-2016.....	18
13	Length frequency of bass speared during 2016 and during the thirty-two year period 1985-2016	19
14	Number of northern pike harvested during spring spearing seasons from 2000-2016	19
15	Length frequency of northern pike speared during 2016 and during the thirty-two year period 1985-2016	20

INTRODUCTION

This report presents data for harvest and effort by Chippewa spearmen in ceded territory waters of northern Wisconsin (Figure 1) during the 2016 open water season. The majority of harvest was taken through spearing during spring. Since 1989 spearing, gill-netting, fyke-netting and dip-netting have occasionally occurred after spring in off-reservation waters. After spring, spearing occurred in four lakes on two different dates. During 2016 fyke-netting occurred in one river segment and four lakes during spring. Gill-netting occurred in one lake after June 1.

REGULATIONS

Regulations governing the use of spears and nets for harvesting walleye and muskellunge were adopted by each of the six Wisconsin tribes and became permanent in 1989. A listing of the major differences between permanent regulations and negotiated interim rules that governed tribal harvest in 1988 can be found in Kmiecik and Shively (1990).

As part of the Stipulation Review Process, several changes to tribal regulations which had been agreed to annually as experiments were agreed to for a six (6) year period starting in 2011. The bag and permit limits for walleye in designated river segments were replaced with a nightly quota of 60 for a maximum of two days. Also, an additional eight river segments were listed as available for spearing plus additional gill-net mesh sizes on lakes 1,000 acres and larger were agreed to.

Several other regulatory changes were made as part of this process. A stretch of the Yellow River was designated for walleye harvest under the Yellow Lake walleye quota, and a stretch of the Totogatic River was opened for harvest under the Minong Flowage quota. The safety factors for walleye for one and two year old population estimates were adjusted to 41% and 33%, respectively. A list of lakes was identified where on-site monitoring was not required, i.e. alternative monitoring lakes.

PERMIT SYSTEM AND MONITORING

The permit system has operated in the same manner since 1988. Permits (Figure 2) were issued at a tribal office during the day or at the designated boat landing at night. The number of permits that could be issued was determined daily by dividing the remaining tribal quota (TQ) for a lake by the nightly bag limit selected for that lake. Lakes were closed to further spearing of walleye and to all netting once the walleye TQ was reached. However, spearing permits could be issued for harvest of other species.

All spearing was monitored by tribal creel clerks under the supervision of Great Lakes Indian Fish and Wildlife Commission (GLIFWC) wardens and biologists. Eighteen lakes on the alternate monitoring list were named, spearing occurred on ten of the lakes. A creel team was sent to monitor harvest on nine of the lakes, the remaining lakes' harvest was creeled at a different lake being monitored. A set of instructions for collecting biological data was provided to creel clerks at a training meeting prior to the spring season.

During spearing, teams of creel clerks and wardens were assigned to each lake in some areas and only to lakes where permits had been issued in other areas. These teams arrived at the designated boat landing before dark and completed a catch report form upon return of each boating party. For species other than walleye, all fish were identified, counted, sex determined, and measured. For walleye, all fish were counted. Also, the first 100 walleye plus all those in the last boat were measured and sex determined. In addition, permits were collected and a record was made of each person's tribal ID number, the time spearing started and the time it ended.

Harvest and effort for each lake were totaled and reported by 9 a.m. the following day to administrative staff at the GLIFWC office in Odanah. These data were then transmitted to tribal and Wisconsin Department of Natural Resources (WDNR) representatives by 10 a.m. and used to update walleye and muskellunge TQ's. During 2015 all catch report forms were faxed or emailed in daily. Tribal representatives typically notified GLIFWC before noon of the lakes and bag limits selected for spearing that night. In turn, these data were transmitted to the WDNR.

Figure 1. Map depicting the ceded territory in northern Wisconsin. Heavy line indicates approximate ceded territory boundary.

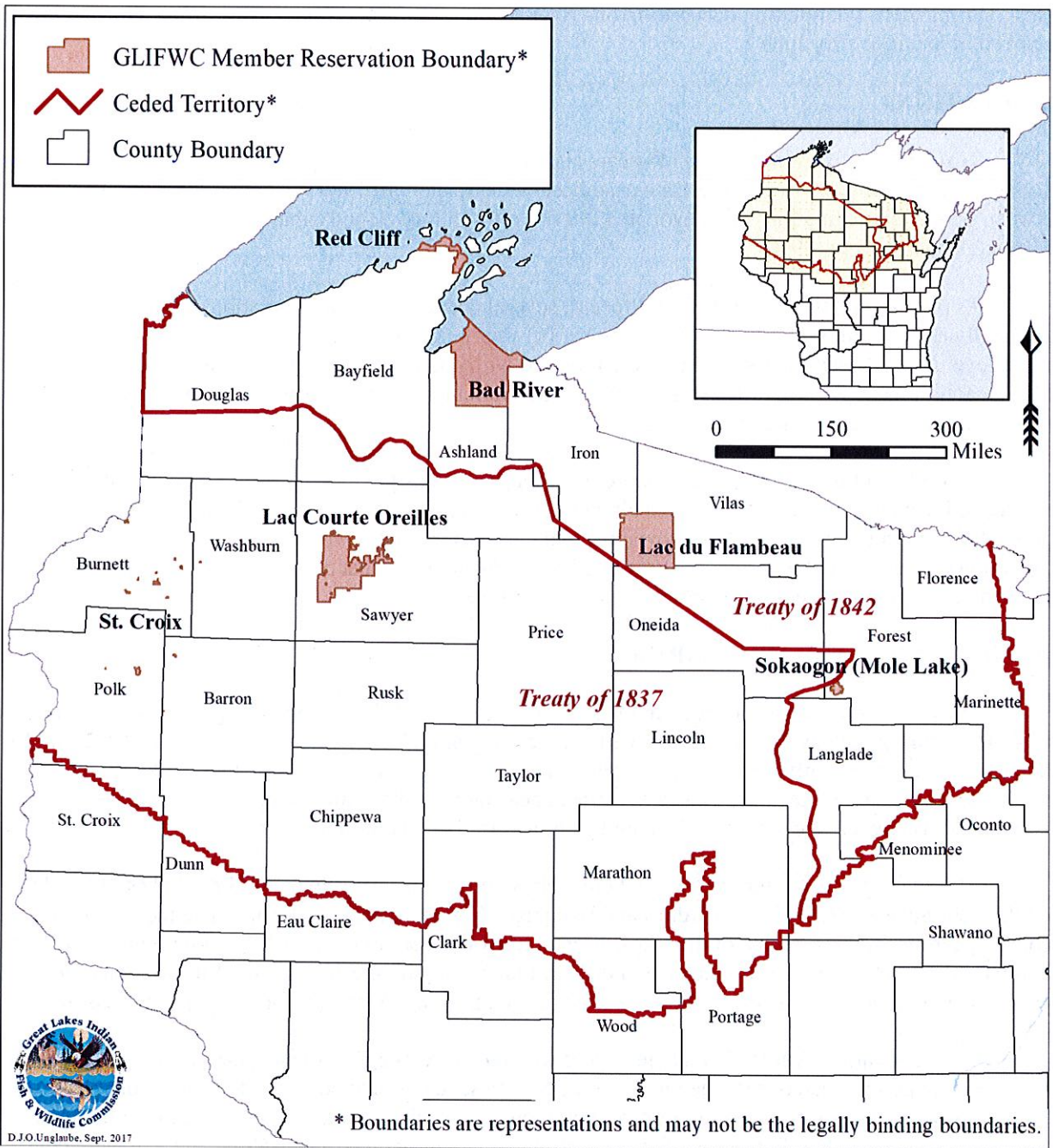


Figure 2. Off-Reservation Treaty Fishing Permit used during the 2016 open-water season.

28	29	30	31	Month _____	1	2	3	4	5
27	Off-Reservation Treaty Fishing Permit <input type="checkbox"/> Spearing <input type="checkbox"/> Fyke Netting No 0250 <input type="checkbox"/> Seining <input type="checkbox"/> Gill Netting								6
26									7
25	Tribal ID Number _____ of _____ Reservation								8
24	Signature of Permittee: _____								9
23	Issued by: _____ of _____ Reservation								10
22	Water: _____ County: _____								11
21	Bag Limit: Walleye _____ Muskellunge _____								12
Other Restrictions: _____									

FRONT

Start Time: _____ (am or pm)			Net Length: _____		
End Time: _____ (am or pm)			Mesh: _____		
Species	Count	Weight (lbs)	Species	Length (in.)	Sex
Walleye	_____	_____	_____	_____	_____
Northern Pike	_____	_____	_____	_____	_____
Yellow Perch	_____	_____	_____	_____	_____
_____	_____	_____	_____	_____	_____
_____	_____	_____	_____	_____	_____
_____	_____	_____	_____	_____	_____
_____	_____	_____	_____	_____	_____
_____	_____	_____	_____	_____	_____
_____	_____	_____	_____	_____	_____
_____	_____	_____	_____	_____	_____

BACK

RESULTS AND DISCUSSION

Fishing Effort

As in previous years, effort in the spring spear fishery was measured in three ways: by the number of spearkers, the number of spearker-nights, and the number of boat-hours.

Number of Spearkers. All tribal members spearing under permits issued by each tribe were counted as an individual spearker for that tribe regardless of whether the spearker was an enrolled member of the tribe issuing permits. A total of 531 tribal members participated in the 2016 spring spear fishery (Table 1, Figure 3, Appendix A). Compared to 2016, the total number of spearkers decreased by 37 persons or 7%.

Table 1. Number of spearkers on lakes selected by six Wisconsin Chippewa bands during spring spearing from 2000-2016¹.

YEAR	BRV	LCO	LDF	MLK	RCF	STC ^{2,3}	TOTAL:
2000	44	78	151	61	57	50	441
2001	36	67	139	71	55	41	409
2002	34	56	150	63	54	62	419
2003	30	53	154	62	46	54	399
2004	25	56	158	65	53	48	405
2005	41	69	146	117	59	51	483
2006	35	82	165	58	58	67	465
2007	40	93	157	68	68	63	489
2008	36	72	142	76	54	47	427
2009	42	99	125	126	55	45	492
2010	36	89	91	150	49	55	470
2011	41	98	140	69	45	70	463
2012	46	107	185	60	49	60	507
2013	42	82	172	52	29	55	432
2014	71	106	167	71	56	55	526
2015	70	116	186	69	71	56	568
2016	44	101	218	71	50	47	531
PERCENT CHANGE: 2015-2016	-37%	-13%	+17%	+3%	-30%	-16%	-7%

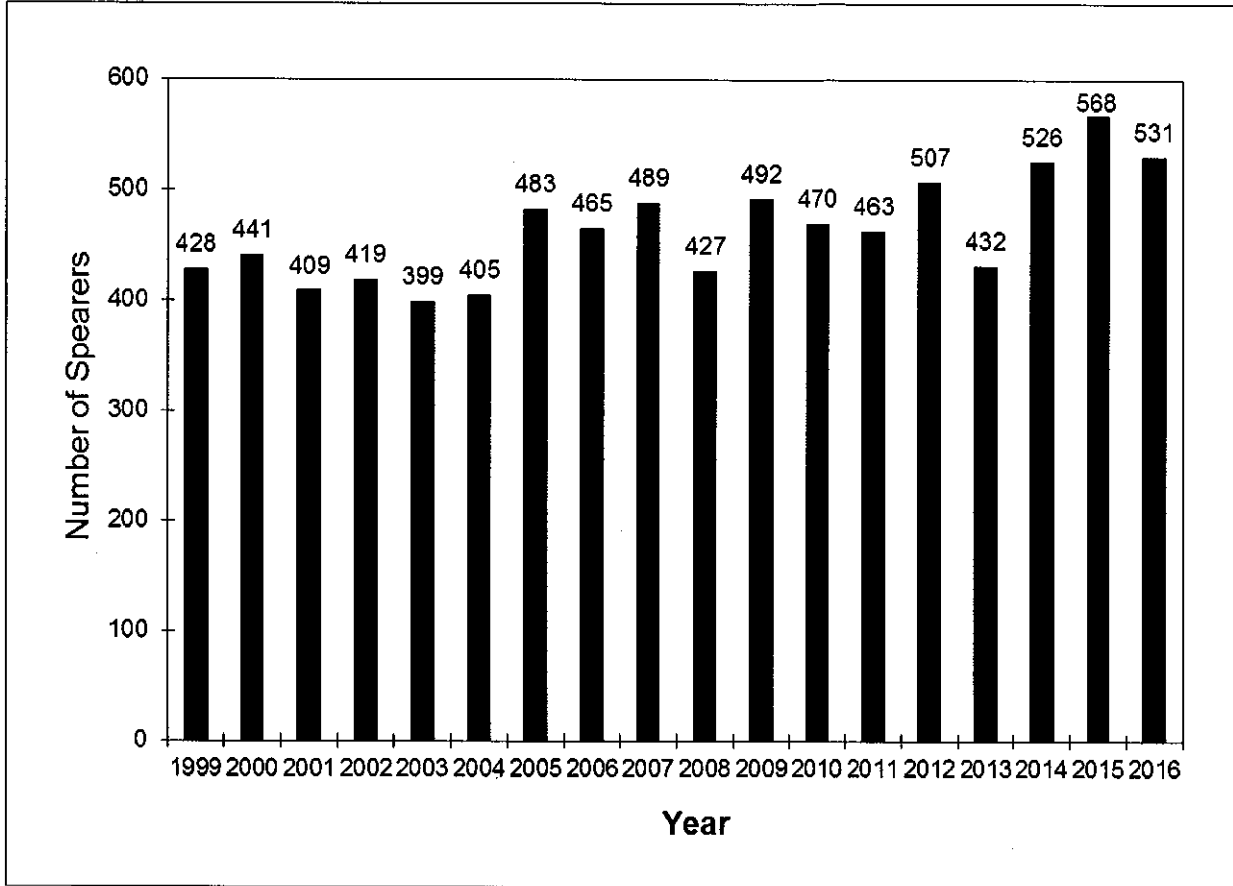
¹ Abbreviations for the various bands are: BRV = Bad River, LCO = Lac Courtes Oreilles, LDF = Lac du Flambeau, MLK = Mole Lake, RCF = Red Cliff, and STC = St. Croix.

² Includes members from the Mille Lacs tribe for 1997-2004 and 2012.

³ Includes members from the Fond du Lac tribe for 2014

All persons spearing on lakes selected by Bad River, Lac du Flambeau and Red Cliff were members of that tribe. The number of members from other tribes that speared on lakes selected by Lac Courte Oreilles was 7, by Mole Lake was 1 and by St. Croix were 6.

Figure 3. Number of spearkers during spring spearing seasons from 2000-2016.



Number of Spearer-nights or Permits Used. In a previous report (Kmiecik 1991), special clarification was given to the definition of "spearer-nights". It should be understood that the total number of "spearer-nights" is not simply the total number of nights that all tribal members speared, because some individuals speared under more than one permit on a single night. Additional permits have been issued at night at a boat landing on a "first come, first served" basis and only when enough fish remained in the tribal quota for a lake so that other permits could be issued. Persons receiving a second, third, or fourth permit may have speared on the same lake, a different lake, or both the same and a different lake. With this clarification in mind, this effort statistic will continue to be referred to as spearer-nights, but it can also be viewed as a count of the total number of permits used.

Table 2. Number of spearer-nights on lakes selected by six Wisconsin Chippewa bands during spring spearing from 2000-2016.

YEAR	BRV	LCO ¹	LDF	MLK ²	RCF	STC ³	TOTAL:
2000	178	388	774	285	186	295	2,106
2001	105	216	537	214	143	201	1,416
2002	155	196	605	271	152	362	1,741
2003	122	234	517	214	116	317	1,520
2004	127	157	594	259	149	346	1,632
2005	130	283	551	383	161	294	1,802
2006	129	266	697	265	195	286	1,838
2007	143	294	722	303	175	382	2,019
2008	93	229	531	276	157	275	1,561
2009	123	278	540	439	157	271	1,808
2010	136	325	366	606	178	375	1,986
2011	104	314	716	284	142	332	1,892
2012	147	389	1,100	329	155	309	2,429
2013	126	271	795	223	69	238	1,722
2014	193	332	746	315	126	228	1,940
2015	175	377	1,022	324	171	287	2,356
2016	166	371	1,142	313	181	235	2,408
PERCENT CHANGE: 2015-2016	-5%	-2%	+12%	-3%	+6%	-18%	+2%

¹ Includes 18 spearer-nights for five RCF members and two BRV members.

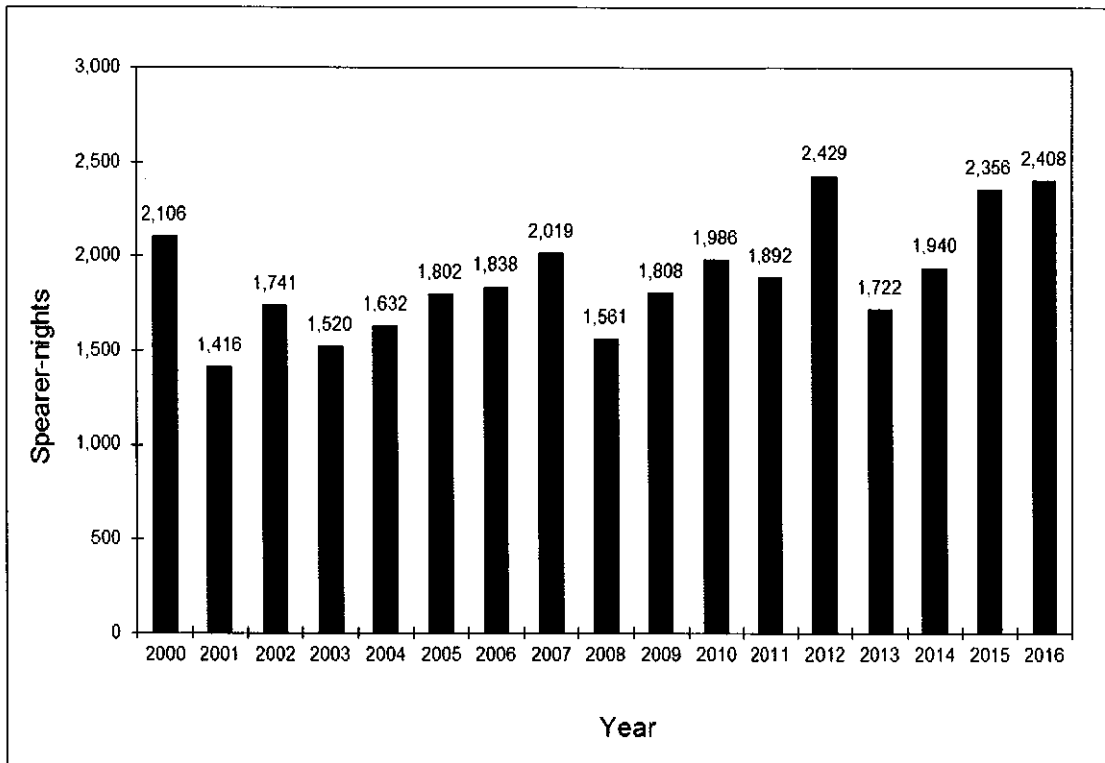
² Includes 6 spearer-nights for one RCF member, spearer-nights for Mille Lacs tribe for 1997-2004 and 2012 and FDL tribe for 2014.

³ Includes 11 spearer-nights for two BRV members, and four LCO members.

Excluding permits issued for muskellunge only spearing, a total of 2,408 spearer-nights were recorded during spring 2016 (Table 2, Figure 4, Appendix B). A little less than one-half of this effort (1,142 spearer-nights) occurred on lakes selected by Lac du Flambeau. Spearer-nights on lakes selected by the other five tribes ranged from 166 at Bad River to 371 at Lac Courte Oreilles. Compared to 2015, effort increased by 52 spearer-nights or 2%.

On twenty-one muskellunge harvest only waters, an additional 118 spearer-nights occurred (Appendix E). Muskellunge only spearer-nights included permits issued for spearing on lakes with only a muskellunge quota (i.e. no walleye quota) and on lakes with both a walleye and muskellunge quota but after the walleye quota was taken and only the muskellunge quota remained.

Figure 4. Number of spearer-nights during spring spearing seasons from 2000-2016.



Number of Boat-Hours. Excluding muskellunge only effort, an estimated 2,685 boat-hours of effort occurred in 2016 (Table 3, Figure 5, Appendix B). Compared to 2015, the number of boat-hours increased by 3% (66 boat-hours). Over one-third of the effort (1,035 boat-hours) occurred on lakes selected by Lac du Flambeau. Boat-hours on lakes selected by the other five tribes ranged from 188 at Red Cliff to 551 at Lac Courte Oreilles.

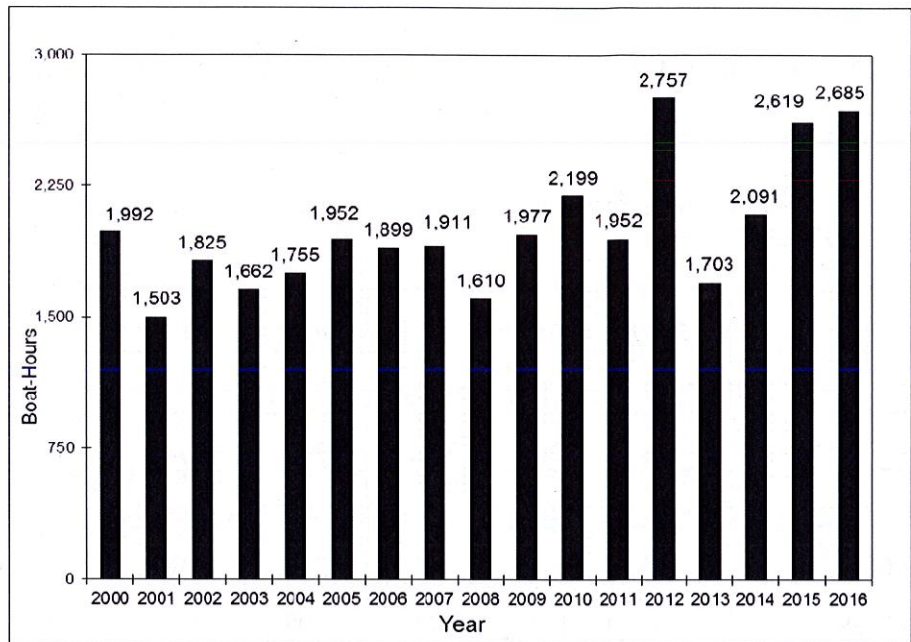
On muskellunge harvest only waters, an additional 122 boat-hours of effort occurred (Appendix E). This muskellunge only effort included spearing on three lakes with only a muskellunge quota (i.e. no walleye quota) and spearing on twenty lakes with both a walleye and muskellunge quota but after the walleye quota was taken and only the muskellunge quota remained.

Table 3. Number of spearer boat-hours on lakes selected by six Wisconsin Chippewa bands during spring spearing from 2000-2016.

Year	BRV	LCO	LDF	MLK	RCF	STC ¹	Total:
2000	226	427	570	202	201	366	1,992
2001	157	273	458	214	171	230	1,503
2002	181	233	489	325	203	395	1,825
2003	152	245	523	268	142	331	1,662
2004	162	203	571	276	167	375	1,755
2005	148	411	518	401	161	313	1,952
2006	155	393	529	300	215	307	1,899
2007	171	322	566	311	182	359	1,911
2008	97	304	520	264	159	267	1,610
2009	128	413	489	430	195	322	1,977
2010	178	514	344	554	215	394	2,199
2011	125	398	681	267	141	340	1,952
2012	206	581	1,127	357	159	327	2,757
2013	180	350	674	189	81	230	1,703
2014	280	413	774	278	132	214	2,091
2015	284	510	955	330	190	350	2,619
2016	288	551	1,035	348	188	276	2,685
PERCENT CHANGE: 2015-2016	+1%	+8%	+8%	+5%	-1%	-21%	+3%

¹Includes effort for Mille Lacs tribe from 1997-2004 and 2012, plus effort for Fond du Lacs tribe in 2014.

Figure 5. Number of boat-hours of effort during spring spearing seasons from 2000-2016.



For all tribes combined, a total of 1,075 interviews were conducted and effort (boat-hours) was determined for all (Table 4, Appendix B). Average length of a trip was 2.5 boat-hours. For muskellunge only lakes an additional 59 interviews were recorded (Appendix E).

Table 4. Number of interviews and average length of spearing trip (in boat-hours) during spring spearing from 2000-2016.

YEAR	AVERAGE LENGTH OF TRIP:						TOTAL
	BRV	LCO	LDF	MLK	RCF	STC ¹	
2000	2.8	2.1	1.8	1.5	2.6	2.5	2.1
2001	2.7	2.6	2.2	2.4	2.8	2.5	2.4
2002	2.2	2.4	2.0	2.5	2.9	2.4	2.3
2003	2.6	2.4	2.6	2.7	2.7	2.3	2.5
2004	2.3	2.6	2.4	2.3	2.4	2.3	2.4
2005	2.3	2.9	2.2	2.4	2.3	2.4	2.4
2006	2.3	3.1	1.8	2.4	2.6	2.1	2.3
2007	2.0	2.3	1.8	2.2	2.6	2.0	2.0
2008	1.9	2.7	2.0	2.1	2.5	1.9	2.1
2009	2.4	3.3	2.0	2.3	2.8	2.5	2.5
2010	3.0	3.4	2.0	2.2	2.7	2.2	2.4
2011	2.7	2.8	2.2	2.5	2.5	2.1	2.4
2012	3.0	3.1	2.3	2.2	2.3	2.2	2.4
2013	3.3	2.7	1.9	1.9	2.3	2.1	2.2
2014	3.2	2.7	2.3	2.1	2.6	2.1	2.4
2015	3.7	3.1	2.2	2.2	2.5	2.0	2.4
2016	3.6	3.0	2.2	2.3	2.4	2.5	2.5
2016 Boat-hours:	288	551	1,035	348	188	276	2,685
2016 interviews with effort:	80	184	472	149	84	109	1,075
2016 interviews without effort:	0	0	0	0	0	0	0

¹Includes effort for Mille Lacs and Fond du Lac tribes in some years.

Total Harvest

Fourteen taxa of fish were harvested during the 2016 spring spear fishery (Table 5). Of the 33,542 fish taken 97.2% were walleye. Percentages of the total catch for other game fish species were 0.7% for muskellunge, .75% for bass, 0.2% for northern pike, and 0.006% for sturgeon. Other species combined (panfish and rough fish) totaled 376 fish and made up the remaining 1.1% of the harvest.

Table 5. Number of various fish species harvested during spring spearing seasons from 2009-2016.

Species:	2009	2010	2011	2012	2013	2014	2015	2016
Walleye	32,201	34,156	29,730	32,311	28,386	27,561	38,535	32,617
Muskellunge	238	335	201	343	274	248	183	234
Bass Species	9	23	8	35	35	6	13	15
Largemouth Bass	195	237	82	211	116	138	323	146
Smallmouth Bass	58	113	22	108	55	57	72	81
Northern Pike	49	50	30	71	39	50	78	62
Rock Bass	18	18	5	18	7	11	9	9
Crappie	110	217	151	212	137	63	274	150
Sunfish (Bluegill, Pumpkinseed)	10	72	31	261	54	33	30	64
Yellow Perch	20	1,088	7	3	8	15	7	14
Sucker	19	51	42	52	84	52	62	67
Cisco	3	25	0	0	2	2	0	0
Carp	0	3	1	0	0	0	0	0
Bowfin	14	7	3	13	0	2	2	4
Burbot	2	0	0	11	0	0	0	2
Bullhead	0	232	1	5	3	3	1	0
Sturgeon	1	3	2	4	1	1	2	2
Trout	0	1	0	0	0	0	0	0
Whitefish	0	0	1	16	0	0	5	75
TOTAL:	32,947	36,631	30,317	33,674	29,201	28,242	39,596	33,542

Walleye Harvest

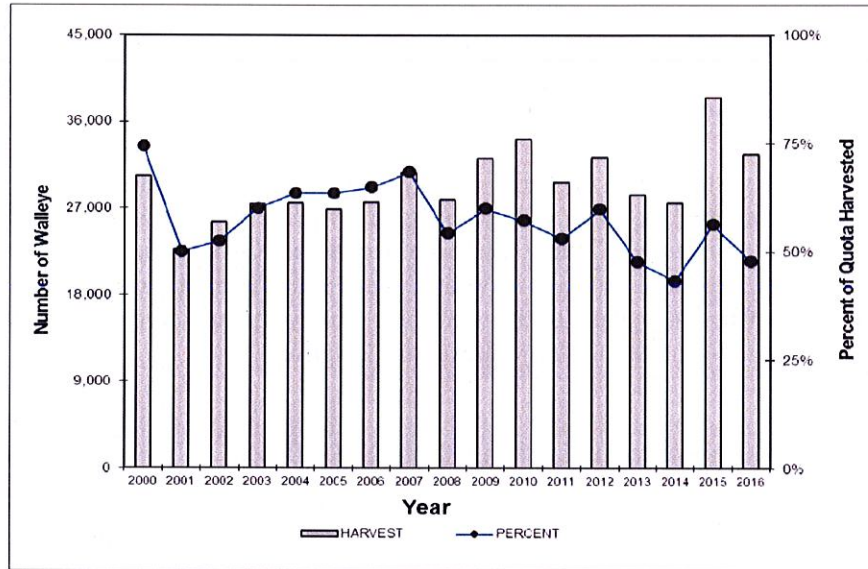
Tribal quotas (TQ) for walleye were selected for 433 lakes and totaled 68,226 walleye (Table 6). The percent of the "safe harvest" selected as tribal quotas for lakes in 2016 ranged from 0.0% (Minocqua Lake, Kawaugesaga Lake, Tomahawk L Chain in Oneida County and Escanaba Lake, Vilas County) to 95.54% (Evergreen Lake in Sawyer County). Two tribes selected the same lake in 9 instances and agreed on various inter-tribal allocation formulas to keep the TQ within the selected percentage. Three lakes were selected by more than two Wisconsin tribes.

Tribal spearers harvested a total of 32,617 walleye from 178 lakes (Table 6, Figure 6, Appendix B). Spearfishing occurred in nine other lakes with a walleye quota (Lower Turtle Lake in Barron County, Lipsett Lake and Little Yellow Lake in Burnett County, Balsam Lake in Polk County, Hayward Lake in Sawyer County, Apeeka Lake, Jag Lake and Lost Lake in Vilas County and Minong Flowage in Washburn County), but no walleye were harvested. The percent of the total tribal walleye quota harvested was 48%. Tribal quotas were exceeded on three lakes by a total of nine walleye during spring.

Table 6. Number of lakes with a tribal walleye quota, spearfishing effort, and harvest plus percent of overall quota harvested during spring from 2000-2016.

Year	Tribal Walleye Quota	Number of Lakes with Quotas	Number of Walleye Harvested	Number of Lakes with Effort	Number of Lakes with Harvest	Percent of Quota Harvested
2000	40,762	253	30,367	173	171	74%
2001	45,321	275	22,743	149	147	50%
2002	48,628	283	25,543	159	153	53%
2003	45,776	281	27,502	166	163	60%
2004	43,315	288	27,546	179	176	64%
2005	43,692	293	26,877	173	172	62%
2006	42,513	285	27,627	177	174	65%
2007	44,813	282	30,700	192	191	69%
2008	51,354	415	27,881	175	172	54%
2009	53,706	420	32,201	181	179	60%
2010	59,659	532	34,156	153	150	57%
2011	55,952	578	29,730	174	168	53%
2012	54,057	539	32,311	195	185	60%
2013	59,441	540	28,386	176	163	48%
2014	63,570	540	27,561	177	160	43%
2015	68,263	542	38,535	187	177	56%
2016	68,226	433	32,617	185	178	48%

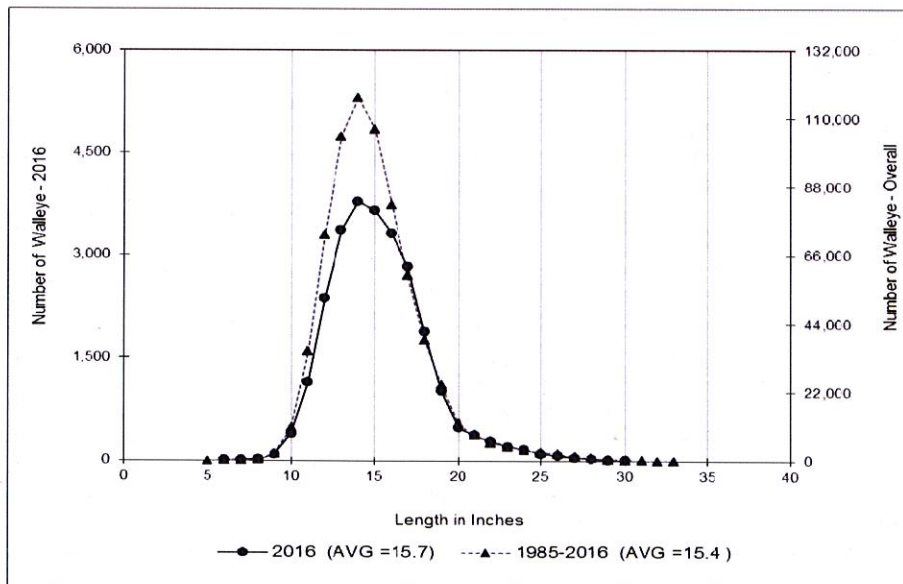
Figure 6. Number of walleye and percent of quota harvested during spring spearing seasons from 2000-2016.



Mean Length. A total of 25,667 walleye (79% of the catch) were measured in 2016 (Appendices C and D). The mean length was 15.7 inches, which is within the average length range from 1985-2016 (range: 15.0-16.3 inches). Size restrictions were identical during each of these thirty-two years; all walleye were to be less than 20 inches except that each permit authorized the harvest of one walleye of 20-24 inches and one of any size.

For the 32 spring spearing seasons combined, 84% of the walleye harvest has been measured (694,957 of 831,237 fish) (Figure 7; Appendix D). Average length for this 32-year sample was 15.4 inches. Also, 6.0% of the walleye (41,759 fish) were 20 inches or larger and 1.1% (7,759 fish) were 25 inches or larger.

Figure 7. Length frequency of walleye speared during 2016 and during the thirty-two year period from 1985-2016.



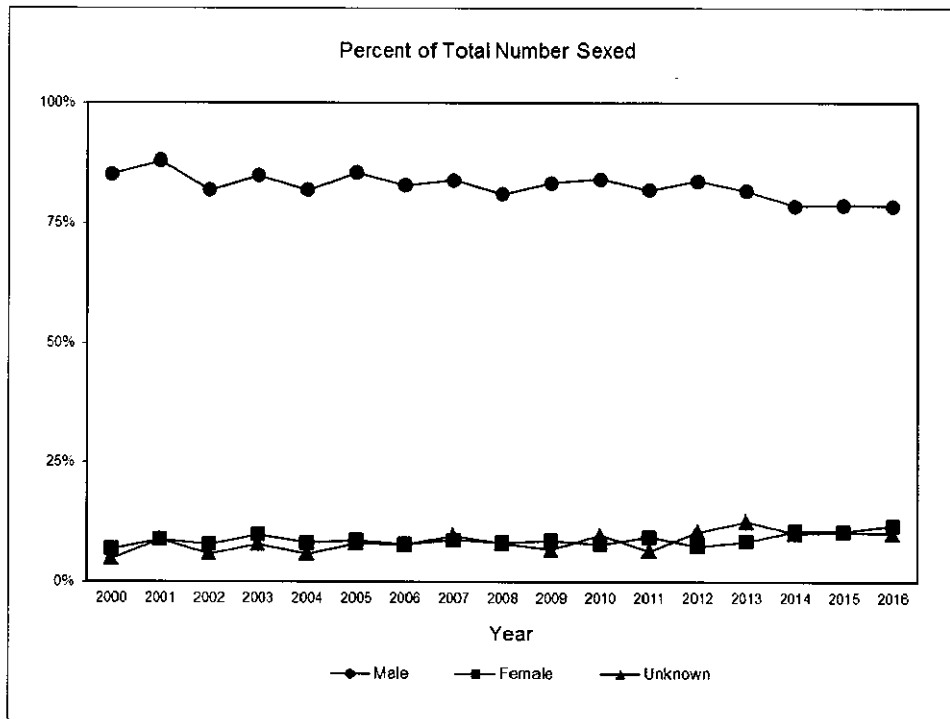
Sex Composition of Catch. The majority of walleye sexed in 2016 were male: 19,873 of 25,576 fish or 78% (Table 7, Appendix C). Females (3,061 fish) comprised 12% of the sexed harvest and those whose sex could not be determined (2,642 fish) made up 10%. Males made up 87% of sexable fish.

For the past 17 spring spearing seasons combined a total of 426,373 walleye have been sexed (Table 7, Figure 8). Of these, 82.4% were male, 9% were female, and 8.6% were of undetermined or unknown sex. Factors which influence the number of males and females speared were described by Kmiecik and Shively (1990). Some of the factors include bag limit and size restrictions, differences in behavior between the sexes during spawning season, and spearer preference.

Table 7. Number and percent of male, female, and unknown walleye that were sexed during spring spearing seasons from 2000-2016.

Year	Total Harvest	Male		Female		Unknown		Total Sexed:	
		Number	Percent	Number	Percent	Number	Percent	Number	Percent
2000	30,367	24,422	88%	1,974	7%	1,477	5%	27,873	92%
2001	22,743	17,402	82%	2,005	9%	1,854	9%	21,261	93%
2002	25,543	19,624	86%	1,889	8%	1,436	6%	22,949	90%
2003	27,502	20,371	82%	2,474	10%	2,006	8%	24,851	90%
2004	27,546	21,226	86%	2,060	8%	1,495	6%	24,781	90%
2005	26,877	20,255	83%	2,143	9%	2,011	8%	24,409	91%
2006	27,627	20,667	84%	1,958	8%	1,944	8%	24,569	89%
2007	30,700	21,722	81%	2,390	9%	2,640	10%	26,752	87%
2008	27,881	20,324	83%	2,045	8%	1,987	8%	24,356	87%
2009	32,201	22,569	84%	2,371	9%	1,846	7%	26,786	83%
2010	34,156	24,604	82%	2,413	8%	2,988	10%	30,005	88%
2011	29,730	19,231	84%	2,182	10%	1,506	6%	22,919	77%
2012	32,311	21,888	81.8%	2,022	7.6%	2,847	10.6%	26,757	83%
2013	28,386	17,398	78.7%	1,905	8.6%	2,819	12.7%	22,122	78%
2014	27,561	16,877	78.9%	2,310	10.8%	2,212	10.3%	21,399	78%
2015	38,535	22,822	78.7%	3,104	10.7%	3,086	10.6%	29,012	75%
2016	32,617	19,873	78%	3,061	12%	2,642	10%	25,576	78%
Total:	502,283	351,275	82.4%	38,306	9%	36,796	8.6%	426,373	85%

Figure 8. Sex composition of the walleye harvest during spring spearing seasons from 2000-2016.



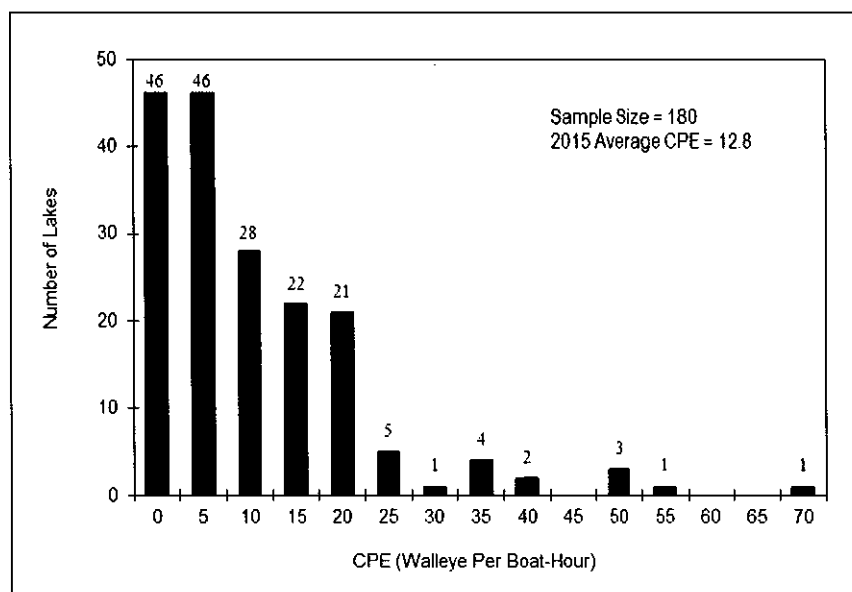
Catch per effort (CPE). In 2016, a total of 2,685 boat-hours of spearing were recorded in which 32,617 walleye were caught. Overall catch per effort (total harvest/total boat-hours) was 12.1 walleye per boat-hour (Appendix B).

Catch rates for the 180 lakes with a walleye quota that were speared in 2016 ranged from 0.0 to 71.2. Catch per effort averaged over individual lakes was 12.8 walleye per boat-hour (Appendix B, Table 8, Figure 9). Boat-hour effort was completely recorded for all lakes in spring 2016.

Table 8. Range and average catch rates in lakes speared during spring spearing seasons from 2000-2016.

Year	Number of Lakes	Range: CPE	Average: CPE
2000	173	0.0 - 101.1	16.8
2001	149	0.0 - 95.4	17.5
2002	159	0.0 - 65.8	16.3
2003	166	0.0 - 77.5	18.5
2004	169	0.0 - 57.1	16.9
2005	173	0.0 - 70.0	15.0
2006	177	0.0 - 57.3	16.7
2007	192	0.0 - 60.9	16.8
2008	175	0.0 - 81.4	17.8
2009	181	0.0 - 62.5	17.2
2010	153	0.0 - 50.6	16.2
2011	174	0.0 - 73.3	16.3
2012	195	0.0 - 55.4	13.3
2013	176	0.0 - 94.3	17.9
2014	177	0.0 - 65.0	12.2
2015	187	0.0 - 60.0	15.0
2016	180	0.0 - 71.2	12.8

Figure 9. Walleye CPE (number per boat-hour) by lake during the 2016 spring spearing season.



Muskellunge Harvest

A total of 234 muskellunge were taken from 72 lakes during spring 2016 (Table 9, Figure 10, Appendix E). Overall 9.4% of the combined tribal muskellunge quota of 1,658 fish selected for 275 lakes was harvested.

Table 9. Number of lakes with tribal muskellunge quota, harvest, and percent of overall quota harvested from 2000-2016.

Year	Tribal Muskellunge Quota	Number of Lakes with Quota	Number of Lakes with Harvest	Number Harvested	Percent of Quota Harvested
2000	1,410	169	59	325	23.1%
2001	1,580	198	61	233	14.7%
2002	1,555	206	52	218	14.0%
2003	1,522	203	65	222	14.6%
2004	1,509	206	69	207	13.7%
2005	1,733	209	65	230	13.3%
2006	1,655	203	69	284	17.2%
2007	1,703	201	73	303	17.8%
2008	2,080	249	62	270	13.0%
2009	2,051	249	60	238	11.6%
2010	2,323	335	77	335	14.4%
2011	2,325	369	56	201	8.6%
2012	2,180	350	90	343	15.7%
2013	1,834	343	78	274	14.7%
2014	1,799	349	73	248	13.8%
2015	1,944	355	67	183	9.4%
2016	1,658	275	72	234	14.1%

For the 72 lakes with a muskellunge quota and with harvest the number of muskellunge harvested ranged from 1 to 22 fish (Appendix E). From ten to 22 muskellunge were taken from 2 lakes, between six to nine muskellunge were taken from 11 lakes, and 1-5 fish were speared in 59 lakes. No muskellunge were speared from the other 203 lakes.

Lengths of the 234 measured muskellunge averaged 39.1 inches and ranged from 27 to 51 inches (Appendix F, Figure 11). During the past thirty-two spring seasons combined 7,493 of 7,543 speared muskellunge have been measured. Average length for this sample of fish was 38.0 inches (range of annual averages: 35.4-39.9 inches).

Of the measured catch in 2016, 10.2% (24 of 234 muskellunge) were 32 inches and smaller, while 15% (35 fish) were 45 inches and larger. For the 7,493 muskellunge measured from 1985-2016, 1,042 fish or 14.0% of the sample were less than or equal to 32 inches; 738 fish or 9.8% were 45 inches and larger (Appendix F).

The number of muskellunge per spearer averaged 0.44 for all tribes combined (Appendix A, Appendix E). In other words, 44 muskellunge were taken for every 100 spearers.

Figure 10. Number of muskellunge harvested during spring spearing seasons from 2000-2016.

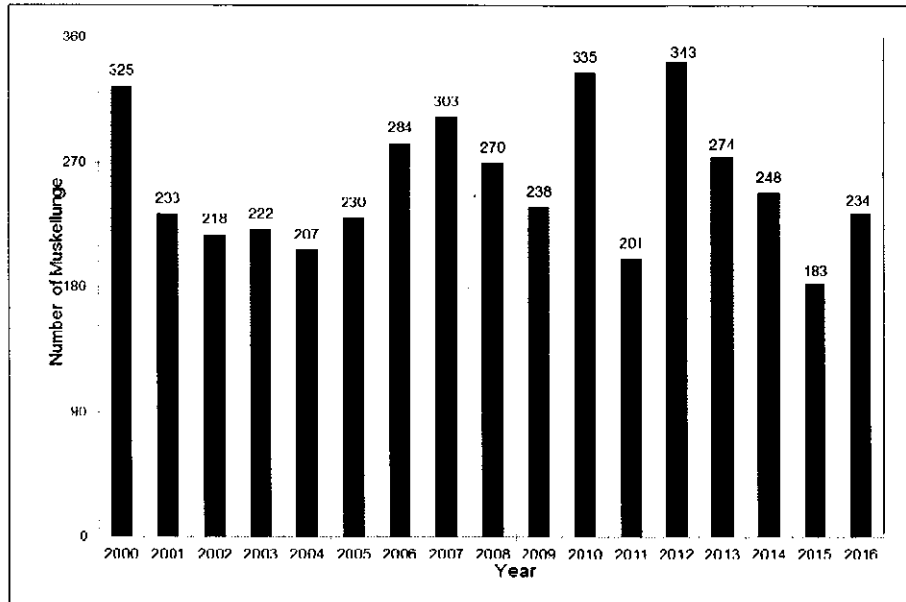
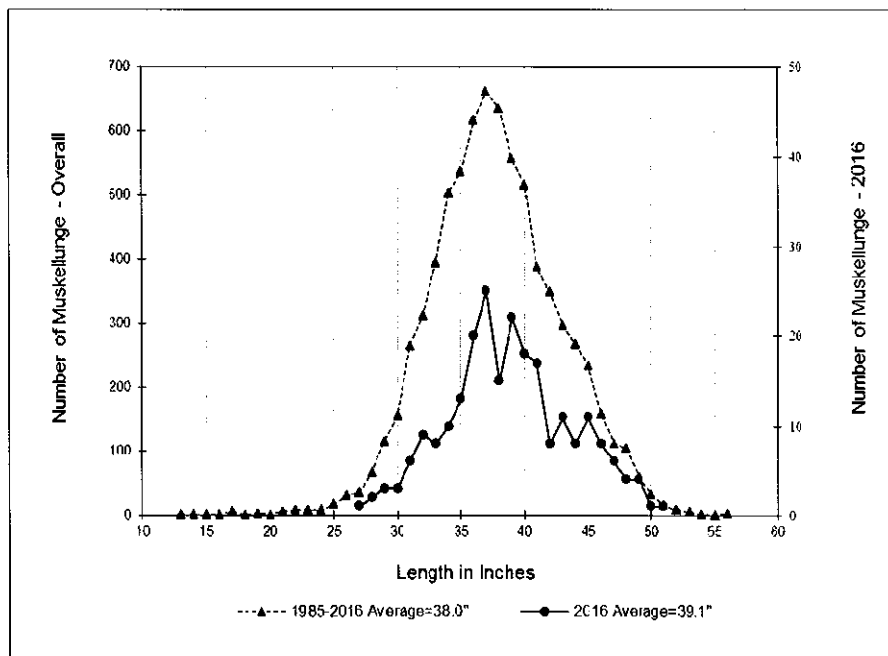


Figure 11. Length-frequency of muskellunge speared during spring 2016 and during the thirty-two year period 1985-2016.



Bass Harvest

A total of 242 bass were harvested from 55 lakes in 14 counties (Appendix G, Figure 12). Species was recorded for 227 harvested bass. A total of 146 largemouth bass were taken from 34 lakes in 12 counties and averaged 15.1 inches. More than 5 largemouth were speared from 7 lakes, and 5 or less were taken from 27 lakes. The number harvested per surface acre of water averaged 0.0070 largemouth bass (range: 0.0003-0.0570).

A total of 81 smallmouth bass were speared from 24 lakes in 10 counties. Average length was 16.1 inches. More than ten fish were harvested on one lake, between six to nine fish were harvested from 2 lakes, and 5 or less fish were taken from 21 lakes. The number harvested per surface acre averaged 0.0026 smallmouth bass (range: 0.0001-0.0455).

A total of 15 unidentified bass were speared from 10 lakes in 5 counties. Average length was 14.2 inches. The number harvested per surface acre averaged 0.0039 bass (range: 0.0003-0.0370).

Lengths of the 224 measured bass ranged from 8.5-22.7 inches and averaged 15.3 inches (Figure 13, Appendix H). Of the 6,264 bass speared during the thirty-two spearing seasons combined, 6,002 have been measured. Average length for this sample was 15.6 inches (range of annual averages: 15.0-16.4 inches). For all tribes combined the number of bass per spearer (CPE) was 0.46.

Figure 12. Number of bass harvested during spring spearing seasons from 2000-2016.

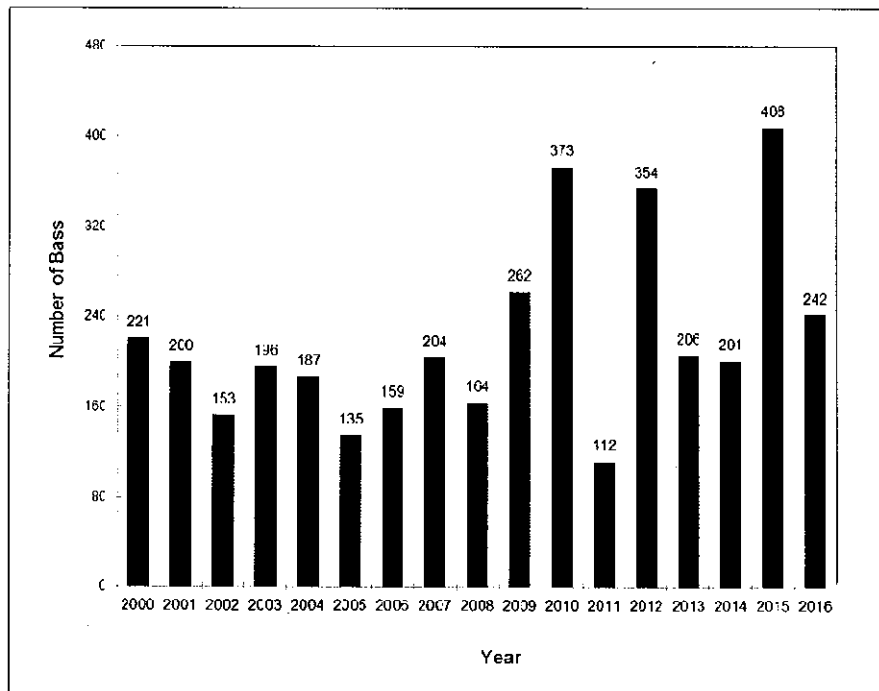
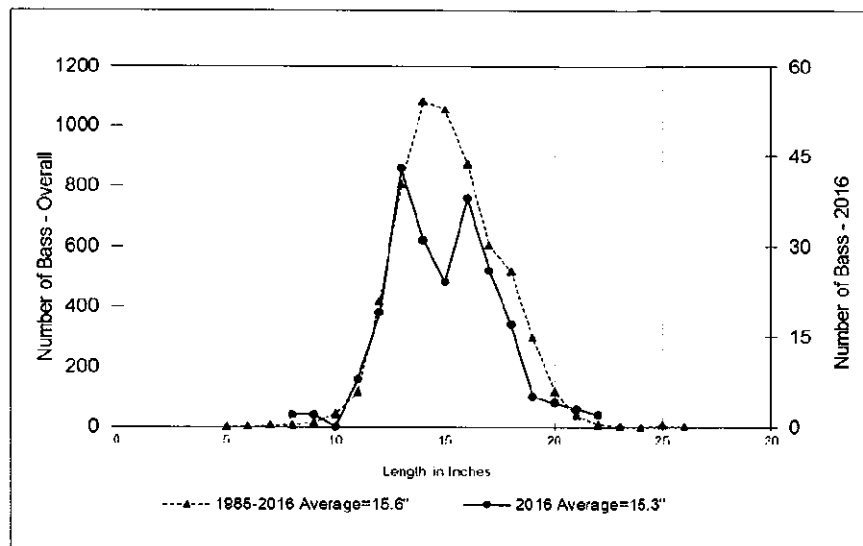


Figure 13. Length-frequency for bass taken during 2016 and during the thirty-two year period 1985-2016.



Northern Pike Harvest

A total of 62 northern pike were harvested from 27 lakes in 9 counties (Appendix G, Figure 14). Six or more fish were taken from 2 lakes, 5 or less fish were taken from 25 lakes. Catch per surface acre of water averaged 0.0037 (range: 0.0002-0.0160).

Lengths of the 59 measured northern pike ranged from 11.6 to 39.0 inches and averaged 26.4 inches (Appendix I, Figure 15). During the thirty-two spring seasons combined a total of 1,192 northern pike have been speared (Appendix I). Of these, 1,105 were measured and length averaged 27.3 inches. Harvest of northern pike continues to be incidental and an insignificant component of the fishery.

Figure 14. Number of northern pike harvested during spring spearing seasons from 2000-2016.

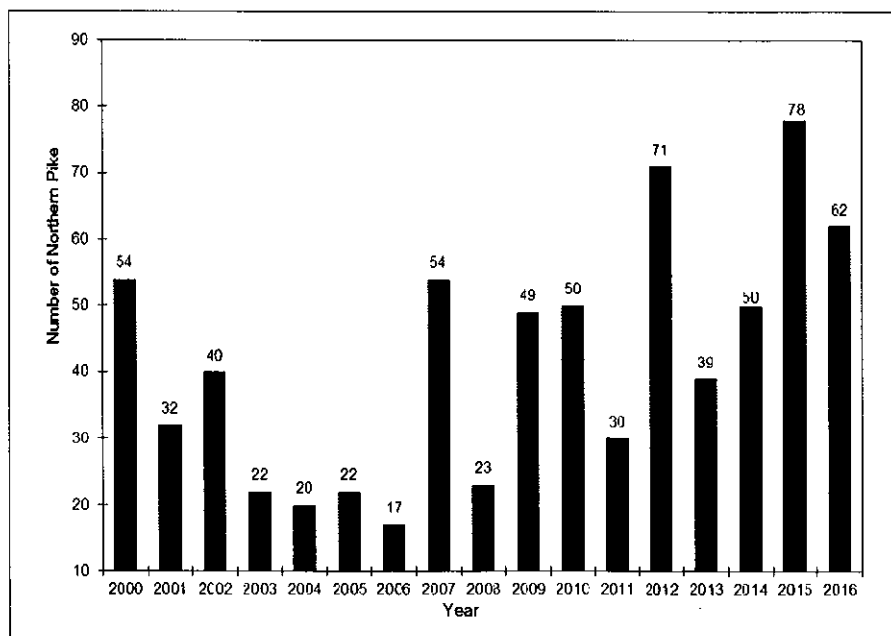
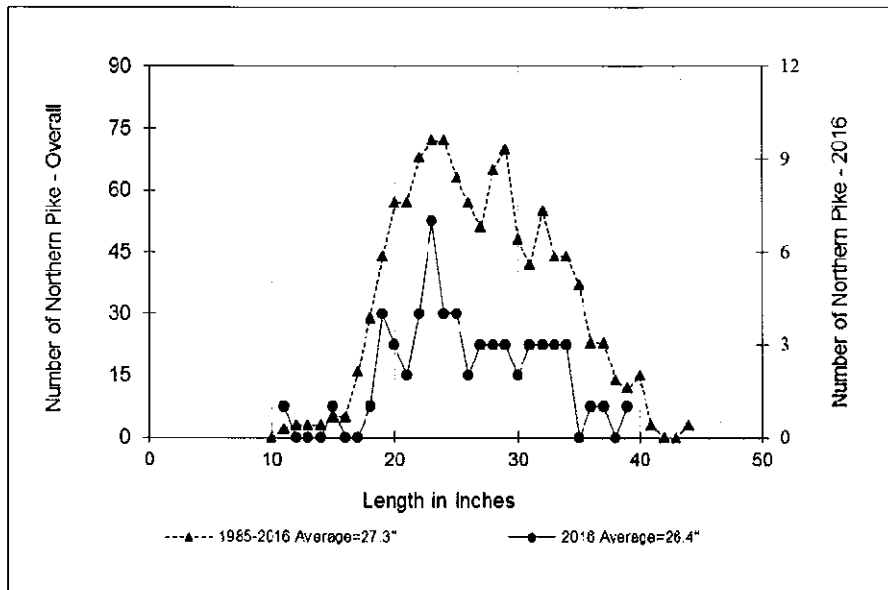


Figure 15. Length frequency of northern pike speared during 2016 and during the thirty-two year period from 1985-2016.



Sturgeon Harvest

Two sturgeons were speared from Yellow Lake (Burnett County); one on April 20, 2016 by a STC member and one on April 22, 2016 also by a STC member. Length of the female sexed sturgeon was 64.5 inches and the unknown sexed sturgeon was 54.5 inches.

Fyke Netting

During spring 2016, fyke netting occurred in four waters and a total of 241 fish were harvested (Table 10). A single fyke net fished for one night on Adjacent Spawning Segment AA- Yellow River (Burnett County) with 6 walleye harvested (Table 10).

Gill Netting

After June 1, 2016 a gill net was set in one lake on one day (Table 11). A total of 12 fish were harvested including 2 walleye and 1 muskellunge.

Fall Spearing

During fall 2016, spearing occurred in four lakes on two different dates (Table 11). A total of 6 walleye were harvested.

Table10. Harvest and effort during spring netting in 2016.

Date	Tribe	Waterbody	County	Gear	Effort (Permits)	Walleye	Northern Pike	Bluegill	Crappie	Largemouth Bass	Smallmouth Bass	Yellow Perch	Bullhead	Sucker	Catfish	Brown Trout
March 22,2016	STC	Upper Clam Lake	Burnett	Fyke Net	1			11	9	1		1				
March 23,2016	STC	Upper Clam Lake	Burnett	Fyke Net	1			1	4							
March 29,2016	STC	Upper Clam Lake	Burnett	Fyke Net	1	2	1	4	42					8		
March 30, 2016	STC	Upper Clam Lake	Burnett	Fyke Net	1	1			7							
April 4, 2016	STC	Upper Clam Lake	Burnett	Fyke Net	1	4	3		1			1				2
April 11, 2016	STC	Upper Clam Lake	Burnett	Fyke Net	1	1		3	1							
April 12, 2016	STC	Upper Clam Lake	Burnett	Fyke Net	1	1		12				15	2	9		
April 13, 2016	STC	Adjacent Spawning Seg. AA- Yellow River	Burnett	Fyke Net	1	6										
April 14, 2016	LDF	Holcombe Flowage	Chippewa	Fyke Net	1				1							
April 15, 2016	LDF	Holcombe Flowage	Chippewa	Fyke Net	1			2	5		2	1				
April 15, 2016	STC	Yellow Lake	Burnett	Fyke Net	1											
April 21, 2016	STC	Upper Clam Lake	Burnett	Fyke Net	1			6	17						1	
April 21, 2016	STC	Upper Clam Lake	Burnett	Fyke Net	1		1	6	15							
April 24, 2016	STC	Upper Clam Lake	Burnett	Fyke Net	1			2	8	1						
May 6, 2016	MLK	Bishop Lake	Forest	Fyke Net	2			2	2				10			
May 7, 2016	MLK	Bishop Lake	Forest	Fyke Net	2			10	2							

Table11. Harvest and effort after June 1, 2016.

Gill Net harvest After Spring			Spearing harvest After Spring			
Date	October 30, 2016		October 11, 2016	October 11, 2016	October 11, 2016	October 14, 2016
Tribe	STC		LDF	LDF	LDF	LDF
Lake	Yellow		Sparkling	Jag	Tomahawk	Booth
County	Burnett		Vilas	Vilas	Oneida	Oneida
# of Permits	1		2	2	2	2
Gear	Net		Spear	Spear	Spear	Spear
Effort	-		1.5 hr.	1 hr.	1.67 hr.	1.67 hr.
Net Type	Gill		-	-	-	-
Net Length	100'/net		-	-	-	-
Net Mesh Size	3.0	3.5	-	-	-	-
Number of members	1		2	2	2	2
Walleye Declaration Balance*	50	38	22	36	MUE only	4
Walleye Harvest	2		5	0		1
Declaration Balance	48	36	17	36		3
Muskellunge Quota	14				14	
Muskellunge Harvest	1				0	
Quota Balance	13				14	
Smallmouth Bass	8					
Sucker	1					

*Walleye declaration balance after spring spearing -. Both 3.0" and 3.5" mesh could be used in Yellow Lake, but the declaration balance would be reduced if 3.5" mesh were used.

LITERATURE CITED

- Kmieciak, N. and J. D. Shively. 1990. Open Water Spearing and Netting in Northern Wisconsin by Chippewa Indians during 1989. Great Lakes Indian Fish and Wildlife Commission, Administrative Report 90-1. 40 pp.
- Kmieciak, N. 1991. Spear Fishery of the Lake Superior Tribes of Chippewa Indians, Spring 1990. Great Lakes Indian Fish and Wildlife Commission, Administrative Report 91-4. 42 pp.
- Luehring, M. 2015. Wisconsin 2015 Gill Net Mesh Sizes. Great Lakes Indian Fish and Wildlife Commission, June 2, 2015. Memo.

ACKNOWLEDGMENTS

The author extends a "Miigwech" to the following workers who assisted with monitoring the fishery (either as creel clerk or seasonal warden) or who issued permits and helped to update and compile harvest data each day:

Bad River (BRV) – Jody W.Bressette, Sydney T.Bressette, Shane A.Cadotte, Jacob A.Deragon, Sharon J.Letson, Jeffery C.McRoy Sr, Duane M.Soulier, Jeffery J.Toman, Louis A.Plucinski, James P.Parisien, Benjamin R.Basley, John A.Wilmer Jr.

Lac Courte Oreilles (LCO) –Lucille L.Andersen, Bahe F.Begay, Charlie J.Braeger, Virginia F.Chosa, Wilberta J.Chosa, Stephen C.Crone, Anthony J.Price Sr, Rhonda J.Rusk, Michelle E.Taylor, Russell F.Thayer, Catrina M.White, David M.White.

Lac du Flambeau (LDF) –Dana R.Allen, Bruce L.Armstrong, Richard B.Awonohopay, Cynthia C.Carufel, Alizay T.Doss, Serena A.Johnson, Anita A.Koser, Salene R.LaRock, Jade A.Ledferd, Tabitha A.Ledferd, Terry L.Mitchell, Samantha L.Pero, Symone R.Pero, Doni E.Poupart, Geronimo J.Powless, Leila R.Schuman, Lisa M.Schuman, Michael F.Schuman, Tanya M.Smith, Victor M.Smith, Eugene P.Soulier Jr, Frank C.White, George A.White, Christine L.Zortman.

Mole Lake (MLK) – Jamie L.Edwards, Joseph T.Gryczkowski, Zena C.Landru, Barron V.Maki, Joleen M.McGeshick, Frank A.Olds, Bronson M.Ramano, Randy M.Robison, Wade A.Saturnus, Alix D.Selig, Bruce W.Weber, Joseph M.Weber.

Red Cliff (RCF) – Tanner E.Bresette, Mark A.Bresette Jr, Andrea B.Hyde, Colleen M.Hyde, Ethan T.Hyde, Jessica L.Soulier, Christopher A.Soulier.

St. Croix (STC) – Michael J.Bearheart, Leslie M.Billy, Nichole R.Bressette, Jacob D.Didier, Peter J.Dunkley, Jeromy M.Lambert, Burton E.Lindemann, Jeremy S.Littlepipe, Brandon J.Lowe, Susan M.Matrious, Joseph L.Oustigoff, Randy I.Phernetton, Robert E.Phernetton, George D.Reynolds, Theron J.Reynolds, Dawn R.Seagraves, Mark L.Soulier, Philip J.Soulier, Mark A.Stoner, Wayne R.Swett.

The efforts of the following GLIFWC wardens in setting up nightly clerk/warden teams and in kindly agreeing to supervise creel clerks is appreciated: Vern Stone (BRV), Lauren Tuori and Mike Popovich (LCO), Christina Dzwonkowski, Jonas Moermond and Riley Brooks (LDF), Adam, McGeshick and Roger McGeshick (MLK), Michael Soulier and James Stone (RCF), Brad Kacizak (STC).

The patience and humor of tribal members during the nightly counting and measuring of fish continues to be recognized and appreciated. I would like to thank Jennifer Krueger-Bear and Kim Campy for their efforts to manage the spring spearing and netting fisheries. Also, I would like to extend a "Chi Miigwech" to Mark Luehring for the time and effort put into the editorial review.

LIST OF APPENDICES

APPENDIX	PAGE
A	Number of tribal members that speared one or more nights on lakes selected by six Wisconsin Chippewa bands during the 2016 spring spear fishery 25
B	Number of walleye harvested nightly on lakes speared by six Wisconsin Chippewa bands during spring 2016. Also, balance of quota, number of boat-hours and catch per effort (CPE = walleye per boat-hour) per lake 26
C	Total number of walleye measured by per inch group and sexed during spring spearing 2016. Data arranged alphabetically by tribe, county, and lake 39
D	Number of walleye per inch group taken during spring spearing seasons from 1985-2016 46
E	Number of muskellunge harvested nightly on lakes speared by six Wisconsin Chippewa bands during spring 2016. Also average length and harvest per acre 48
F	Number of muskellunge per inch group taken during spring spearing seasons from 1985-2016 52
G	Number, average length, and harvest per acre of bass (largemouth and smallmouth), and northern pike from various lakes during spring spearing in 2016 53
H	Number of bass (largemouth and smallmouth combined) taken during spring spearing seasons from 1985-2016 55
I	Number of northern pike per inch group taken during spring spearing seasons from 1985-2016 56

Appendix A. Number of tribal members that speared one or more nights on lakes selected by six Wisconsin Chippewa bands during the 2016 spring spear fishery.

Number Of Nights	Number of Spearers						Total Spearers per # of Nights	Percent of Total	Cumulative Percent
	BRV	LCO ¹	LDF	MLK ²	RCF	STC ³			
1	17	28	61	22	26	18	172	32.4%	32.4%
2	6	19	39	11	4	5	84	15.8%	48.2%
3	9	20	18	10	5	4	66	12.4%	60.6%
4	3	7	20	5	2	4	41	7.7%	68.4%
5	5	9	13	5	6	2	40	7.5%	75.9%
6	2	4	16	5	2	3	32	6.0%	81.9%
7	1	5	13	2	2		23	4.3%	86.3%
8		4	7	3		2	16	3.0%	89.3%
9		4	5	3	3	3	18	3.4%	92.7%
10		1	3	2		1	7	1.3%	94.0%
11	1		4				5	0.9%	94.9%
12			5	1			6	1.1%	96.0%
13			3	2		2	7	1.3%	97.4%
14			1				1	0.2%	97.6%
15			4			1	5	0.9%	98.5%
16			2				2	0.4%	98.9%
17			1			1	2	0.4%	99.2%
19			1			1	2	0.4%	99.6%
20			1				1	0.2%	99.8%
22			1				1	0.2%	100.0%
Total Spearers per Tribe	44	101	218	71	50	47	531	100%	100%

¹ Includes 7 members from other tribes: 2 from BRV and 5 from RCF.

² Includes 1 RCF member .

³ Includes 6 members form other tribes: 2 from BRV and 4 from LCO.

Appendix B. Number of walleye harvested nightly on lakes selected by six Wisconsin Chippewa bands during spring 2016. Also, balance of quota, number of boat-hours, catch per effort (CPE - walleye per boat-hour), number of spearer-nights, number of interviews with effort, and number of interviews without effort.

Six Tribal Bands Combined:	March		April		May		June		July		August		September		October		November		December		Total Harvest	Quota Balance	Boat-Hour	CPE							
	24	25	26	27	28	29	30	31	1	2	3	4	5	6	7	8	9	10	11	12					13	14	15	16	17	18	19
Number of lakes:	1	2	0	0	6	7	6	9	6	1	1	1	10	8	7	7	18	20	18	23	23	22	29	44	42	39	44	37	40	40	
Number of walleye:	58,407	69	37	0	0	179	26	3	178	60	100	35	30	48	104	132	88	142	52	950	632	411	1,411	3,258	3,753	2,029	3,757	3,433	1,971	3,704	
Number of spearer-nights:	7	2	0	0	12	10	6	14	12	4	2	2	8	12	20	2	19	25	6	67	69	63	107	208	190	145	182	225	161	228	
Number of interviews with effort:	3	1	0	0	7	5	2	9	7	4	1	1	5	6	9	2	8	12	2	34	34	31	49	98	87	69	75	95	67	97	
Number of interviews without effort:	0	0	0	0	0	0	0	0	0	0	0	0	0	0	0	0	0	0	0	0	0	0	0	0	0	0	0	0	0	0	
Number of boat-hours:	9	3	0	0	18	10	7	23	15	5	9	10	13	16	20	5	19	27	10	83	88	80	178	298	253	170	209	227	164	192	
Catch-per-effort:	7.3	12.1	*	*	10.2	2.8	0.5	7.7	4.1	19.7	3.8	3.2	3.6	6.4	6.6	6.4	4.6	5.2	5.4	11.5	7.2	5.1	7.9	10.9	14.9	12.0	18.0	15.1	12.0	19.3	
Six Tribal Bands Combined:	April		May		June		July		August		September		October		November		December														
Tribal Quota	23	24	25	26	27	28	29	30	1	2	3	4	5	6	7	8	9	10	11	17	18	21	11	12	14	30	Harvest	Quota Balance	Boat-Hour	CPE	
Number of lakes:	40	31	24	37	31	37	36	34	27	27	28	27	22	26	18	11	12	12	3	2	3	1	3	2	1	1	1,000				
Number of walleye:	1,833	537	527	760	274	422	822	122	212	147	6	48	245	3	20	14	0	0	0	0	0	3	5	0	1	0	32,617	25,790			
Number of spearer-nights:	133	44	38	89	38	49	72	37	27	18	17	17	8	2	4	2	0	0	0	2	0	3	4	0	2	0	2,408				
Number of interviews with effort:	54	21	18	37	16	21	29	17	13	8	7	5	3	1	2	1	0	0	0	1	0	1	2	0	1	0	1,075				
Number of interviews without effort:	0	0	0	0	0	0	0	0	0	0	0	0	0	0	0	0	0	0	0	0	0	0	0	0	0	0	0	0	0	0	
Number of boat-hours:	108	26	27	93	38	44	75	33	21	14	7	12	14	2	4	2	1	0	0	1	0	4	3	0	2	0	2,684.8				
Catch-per-effort:	17.0	21.1	19.2	8.2	7.2	9.7	10.9	3.7	10.1	10.4	0.8	4.2	18.1	1.3	4.8	10.5	*	*	0.0	*	0.8	2.9	*	0.6	*						

Appendix B. Number of walleye harvested nightly on lakes selected by six Wisconsin Chippewa bands during spring 2016. Also, balance of quota, number of boat-hours, number of boat-hours, number of spearer-nights, number of interviews with effort, and number of interviews without effort.

County	Bad River Lake	Area (acres)	2016 Quota Balance	2016												Total Harvest	Boat- Hour	Spear CPE													
				1	2	3	4	5	12	13	14	15	16	17	18				19	20	21	22	23	26	29	30	May 1				
ASHLAND	BEAR L	204	45																							0					
ASHLAND	GORDON L	142	48																												
ASHLAND	L GALLEE	213	1																												
ASHLAND	MINERAL L	225	94																												
BAYFIELD	LOWEN	1,323	13																												
BAYFIELD	NAMEKAGON L	3,227	28																												
BAYFIELD	SISKIWIT L	330	251																												
CHIPPEWA	HOLCOMBE FL	3,890	271																												
CHIPPEWA	L WISSOTA	6,300	514	**																											
CHIPPEWA	LONG L	1,052	0																												
DOUGLAS	BOND L	293	67																												
DOUGLAS	DOWLING L	154	35																												
DOUGLAS	L MINNESUING	432	17																												
DOUGLAS	WHITEFISH L	832	12																												
IRON	ECHO L	220	18																												
IRON	FISHER L	452	33																												
IRON	LONG L	396	52																												
IRON	PINE L	312	113																												
IRON	SPIDER L	352	83																												
IRON	TRUDE L	781	0																												
IRON	TURTLE-FLAMBEAU FL	13,545	175																												
PRICE	SOLBERG L	859	163																												
RUSK	CHAIN L	468	47																												
RUSK	ISLAND L	526	42																												
SAWYER	CONNORS L	429	-5																												
SAWYER	NELSON L	2,503	186																												
SAWYER	TEAL L	1,049	459																												
TAYLOR	RIB L	320	29																												
VILAS	ANNABELLE L	213	173																												
VILAS	BLACK OAK L	584	9																												
VILAS	CRAB L	949	154																												
VILAS	FOREST L	466	0																												
VILAS	HARRIS L	507	164																												
VILAS	HIGH L	734	183																												
VILAS	MAMIE L	400	382																												
VILAS	N TURTLE L	369	230																												
VILAS	PRESQUE ISLE L CHAIN	1,571	0																												
VILAS	S TURTLE L	454	163																												
VILAS	TENDERFOOT L	437	237																												
Number of lakes:		41																													
Number of walleye:			4,322																												
Number of spearer-nights(# permits):																															
Number of interviews with effort:																															
Number of interviews without effort:																															
Number of boat-hours:																															
Catch-per-effort:																															

* Lakes not speared during spring 2016.

** Lakes open for spearing but no effort.

Appendix B. Number of walleye harvested nightly on lakes selected by six Wisconsin Chippewa bands during spring 2016. Also, balance of quota, number of boat-hours, catch per effort (CPE - walleye per boat-hour), number of spearer-nights, number of interviews with effort, and number of interviews without effort.

County	Sokaogon (Mole Lake)		Area (acres)	2016 Quota Balance	2016 Tribal Quota	April 12	13	14	15	16	17	18	19	20	21	22	23	24	25	26	27	28	29	30	May 1	Total Harvest	Boat- Hour	Spear CPE			
	Lake																														
ASHLAND	L GALILEE		213	0	0																					0					
FLORENCE	EMILY L		191	24	24																						0				
FLORENCE	FAY L		282	15	19																		**	4			4	0.75	5.3		
FLORENCE	FISHER L		54	0	0																						0				
FLORENCE	HALSEY L		512	75	75																		**				0				
FLORENCE	KEYES L		210	16	16																						0				
FLORENCE	PATTEN L		255	0	38																				38		38	1.5	24.8		
FLORENCE	PINE R FL		127	29	29																					0					
FLORENCE	SEA LION L		125	2	2																						0				
FLORENCE	ARBUTUS L		161	13	13																						0				
FLORENCE	BIRCH L		488	103	103																						0				
FLORENCE	BUTTERNUT L		1,292	0	336																						336	28.4	12.7		
FLORENCE	CRANE L		337	15	22																						7	1.6	4.3		
FLORENCE	FRANKLIN L		892	47	47																						0				
FLORENCE	GFOUND HEMLOCK L		88	7	7																						0				
FLORENCE	HOWELL L		177	55	55																						0				
FLORENCE	JUNGLE L		182	61	61																						0				
FLORENCE	KING L		33	7	7																						0				
FLORENCE	L LUCERNE		1,028	14	96																						82	4.8	17.3		
FLORENCE	L METONGA		1,991	29	895																						82	4.8	17.3		
FLORENCE	LILY L		211	0	142	6					**	17															515	51.8	16.7		
FLORENCE	LITTLE LONG L		102	1	1																						142	11.5	12.3		
FLORENCE	MOLE L		73	1	1																						0				
FLORENCE	PINE L		1,670	141	141																						0				
FLORENCE	RANGE LINE L		82	40	40																						0				
FLORENCE	ROBERTS L		414	0	113																						82	4.8	17.3		
FLORENCE	SILVER L		320	5	5																						78	35			
FLORENCE	STEVENS L		297	23	61																						0				
FLORENCE	TRUMP L		172	8	8																						15				
LANGLADE	BIG TWIN L		60	0	0																						38	5.3	7.1		
LANGLADE	DUCK L		123	2	2																						0				
LANGLADE	ENTERPRISE L		505	0	112	112																					0				
LANGLADE	JESSIE L		35	0	0																						112	6.3	17.7		
LANGLADE	LAWRENCE L		50	0	0																						0				
LANGLADE	MOCCASIN L		110	1	1																						0				
LANGLADE	MUELLER L		88	1	1																						0				
LANGLADE	OTTER L		83	9	43																						0				
LANGLADE	PICKEREL L		1,256	17	17																						34	4.2	8.1		
LANGLADE	ROLLING STONE L		672	10	10																						0				
LANGLADE	ROSE L		112	14	14																						0				
LANGLADE	SAWYER L		149	8	14	**																					6	2.3	2.6		
LANGLADE	SUMMIT L		282	4	4																						0				
LANGLADE	UPPER POST L		757	60	60																						0				
LANGLADE	WHITE L		166	2	2																						0				
LINCOLN	ALEXANDER L		677	157	157																						0				
LINCOLN	DEER L		152	21	21																						0				
MARATHON	BIG EAU PLEINE RESERVOIR		6,830	2,752	2,752																						0				
MARINETTE	BIG NEWTON L		68	16	16																						0				
MARINETTE	CALDRON FALLS RESERVOIR		1,018	14	14																						0				
MARINETTE	HIGH FALLS RESERVOIR		1,498	116	116																						0				

Appendix B. Number of walleye harvested nightly on lakes selected by six Wisconsin Chippewa bands during spring 2016. Also, balance of quota, number of boat-hours, number of boat-hours, catch per effort (CPE - walleye per boat-hour), number of speaker-nights, number of interviews with effort, and number of interviews without effort.

County	Sokogon (Mato Lake)	Area (acres)	2016 Quota Balance	2016 Tribal Quota	April 12	13	14	15	16	17	18	19	20	21	22	23	24	25	26	27	28	29	30	May 1	Total Harvest	Boat-Hour	Spear CPE
ONEIDA	HODSTRADT L	126	2	2																					0		*
ONEIDA	ISLAND L	295	65	65																					0		*
ONEIDA	JENNIE WEBBER L	226	3	3																					0		*
ONEIDA	JULIA L (THREE LAKES)	401	89	89																					0		*
ONEIDA	KATE PIER L	34	7	7																					0		*
ONEIDA	KILLARNEY L	421	6	6																					0		*
ONEIDA	L JULIA (RHINELANDER)	238	0	40	21	**	19																		40	4.7	8.6
ONEIDA	L SEVENTEEN	172	14	14																					0		*
ONEIDA	LAUREL L	232	76	76																					0		*
ONEIDA	LITTLE BEARSKIN L	164	2	2																					0		*
ONEIDA	LITTLE CARR L	52	0	0																					0		*
ONEIDA	LITTLE FORK L	354	205	282						77	**														77	10.6	7.3
ONEIDA	LONE STONE L	172	0	0																					0		*
ONEIDA	LONG L	113	25	25																					0		*
ONEIDA	LONG L	620	14	143						129															129	6.8	18.9
ONEIDA	LONG L	56	13	13																					0		*
ONEIDA	LOST L	155	35	35																					0		*
ONEIDA	LOWER KAUBASHINE L	187	16	16																					0		*
ONEIDA	LUMEN L	49	11	11																					0		*
ONEIDA	MAPLE L	144	2	2																					0		*
ONEIDA	MARGARET L	88	19	19																					0		*
ONEIDA	MARS L	41	9	9																					0		*
ONEIDA	MCCORMICK L	118	10	10																					0		*
ONEIDA	MID L	215	3	3																					0		*
ONEIDA	MILDRED L	191	7	7																					0		*
ONEIDA	MOCCASIN L	95	21	21																					0		*
ONEIDA	MOEN L	480	37	37																					0		*
ONEIDA	MUD L	41	9	9																					0		*
ONEIDA	MUD L	124	2	2																					0		*
ONEIDA	MUSKIE L	43	0	0																					0		*
ONEIDA	N TWO L	146	33	33																					0		*
ONEIDA	OATMEAL L	97	1	1																					0		*
ONEIDA	PARADISE L	89	1	1																					0		*
ONEIDA	PELICAN L	3,585	0	685	472	65	100	48																	685	38.0	18.0
ONEIDA	PIER L	257	20	20																					0		*
ONEIDA	PINE L	203	45	45																					0		*
ONEIDA	PLANTING GROUND L	1,012	1	176						175															175	9.3	18.9
ONEIDA	PRAIRIE L	58	13	13																					0		*
ONEIDA	RANGE LINE L	123	28	28																					0		*
ONEIDA	RHINELANDER FL	1,326	283	283																					0		*
ONEIDA	ROCKY RUN FL	96	21	21																					0		*
ONEIDA	ROUND L	150	34	34																					0		*
ONEIDA	S PINE L	77	18	18																					0		*
ONEIDA	S TWO L	214	48	48																					0		*
ONEIDA	SECOND L	111	25	25																					0		*
ONEIDA	SEVENMILE L	503	41	41																					0		*
ONEIDA	SHEPARD L	179	3	3																					0		*
ONEIDA	SKUNK L	130	29	29																					0		*
ONEIDA	SOO L	135	30	30																					0		*
ONEIDA	SPIDER L	118	47	47																					0		*
ONEIDA	SPIRIT L	368	81	81																					0		*

Appendix B. Number of walleye harvested nightly on lakes selected by six Wisconsin Chippewa bands during spring 2016. Also, balance of quota, number of boat-hours, catch per effort (CPE - walleye per boat-hour), number of spearer-nights, number of interviews with effort, and number of interviews without effort.

Sokaogon (Mole Lake)		Area (acres)	2016 Quota Balance	2016 Tribal Quota	April 12	13	14	15	16	17	18	19	20	21	22	23	24	25	26	27	28	29	30	May 1	Total Harvest	Boat-Hour	Spear CPE
County	ONEIDA	396	73	73																				0			
Lake	SQUASH L	405	7	7																				0			
	STELLA L	248	56	56																				0			
	STONE L	88	1	1																				0			
	SUNDAY L	33	7	7																				0			
	SUNSET L	296	5	5																				0			
	SWAMP L	89	22	22																				0			
	TAMARACK L	103	23	23																				0			
	THIRD L	172	38	38																				0			
	THUNDER L	84	18	18																				0			
	TIM LYNN L	102	8	8																				0			
	TOM DOYLE L	152	34	34																				0			
	TOWNLINE L	53	0	0																				0			
	TURTLE L	65	15	15																				0			
	VENUS L	276	61	61																				0			
	VIRGIN L	61	14	14																				0			
	WALTERS L	205	3	3																				0			
	WHITEFISH L	28	2	2																				0			
	WILDWOOD L	395	6	6																				0			
	WILLOW L	1,408	0	0																				0			
	BIG SAND L	1,012	0	0						203														85	4.3	20.0	
	CATFISH L	958	0	0						207														219	10.4	21.1	
	CRANBERRY L	957	246	282						207														207	4.9	42.0	
	KENTUCK L	4,300	122	217						29						7							**	0	36	13.0	2.8
	LAC VIEUX DESERT	872	184	208						25						14								95	13.5	7.0	
	LONG L	3,430	0	1,054						330	724				**									25	8.6	2.9	
	TWIN L CHAIN													330	724									1054	30.0	35.2	
Number of lakes:		178			5	4	0	5	6	5	5	5	3	4	4	5	0	1	3	0	5	2	2	2			
Number of walleyes:			7,630	13,313	611	208	0	272	630	824	301	172	756	592	955	238	0	10	75	0	18	21	0	0	5,683		
Number of spearer-nights: (# of permits)					33	15	0	13	33	34	17	23	38	29	41	15	0	3	6	0	7	4	0	2	313		
Number of interviews with effort:					17	6	0	8	17	15	8	10	17	14	19	7	0	1	3	0	3	2	0	2	149		
Number of interviews without effort:					0	0	0	0	0	0	0	0	0	0	0	0	0	0	0	0	0	0	0	0	0		
Number of boat-hours:					34.6	16.1	0.0	19.4	45.2	41.5	15.0	24.7	44.2	33.3	39.2	16.2	0.0	2.0	6.3	0.0	5.5	3.3	0.0	1.4	347.8		
Catch-per-effort:					17.7	12.9	*	14.0	13.9	19.8	20.0	7.0	17.1	17.8	24.4	14.7	*	5.0	11.9	*	3.3	6.3	*	0.0	16.3		

* Lakes not speared during spring 2016
 ** Lakes open for spearing but no effort.

Appendix B. Number of walleye harvested nightly on lakes selected by six Wisconsin Chippewa bands during spring 2016. Also, balance of quota, number of boat-hours, catch per effort (CPE - walleye per boat-hour), number of spearer-nights, number of interviews with effort, and number of interviews without effort.

County	Red Cliff Lake	Area (acres)	2016 Quota Balance	2016 Tribal Quota	April	May												Total Harvest	Boat-Hour	Speare CPE																		
						7	8	9	10	11	12	13	14	15	16	17	18				19	20	21	22	23	24	25	26	27	28	29	30	31					
ASHLAND	L GALLEE	213	0	0																																		
BAYFIELD	ATKINS L	176	21	21																																		
BAYFIELD	BLADDER L	81	18	18																																		
BAYFIELD	DIAMOND L	341	20	58																																		
BAYFIELD	L OWEN	1,323	0	79																																		
BAYFIELD	LONG L	263	19	21																																		
BAYFIELD	MIDDLE EAU CLAIRE L	902	0	263																																		
BAYFIELD	NAMEKAGON L	3,227	0	494																																		
BAYFIELD	PIKE L CHAIN	714	0	283																																		
BAYFIELD	UPPER EAU CLAIRE L	995	3	170																																		
DOUGLAS	AMINCON L	426	3	11																																		
DOUGLAS	L MINNESUNG	432	5	18																																		
DOUGLAS	L NEBAGAMON	914	0	83																																		
DOUGLAS	LOWER EAU CLAIRE L	802	0	178																																		
DOUGLAS	UPPER ST CROIX L	855	0	138																																		
IRON	PIKE L	312	104	113																																		
SAWYER	NELSON L	2,503	70	186																																		
WASHBURN	MINONG FL	1,564	428	435																																		
Number of lakes:					10	0	0	2	2	2	2	2	2	2	2	2	2	2	2	2	2	2	2	2	2	2	2	2	2	2	2	2	2	2	2	2	2	
Number of walleye:						0	0	29	0	0	16	18	33	175	85	523	174	288	58	16	293	0	8	0	40	40	12	59	33	1	21	14	0	0	0	3	1,877	
Number of spearer-nights: (# of permits)						0	0	4	6	0	6	2	7	12	6	28	14	18	5	8	22	0	2	0	9	3	2	10	2	4	5	4	0	0	2	181		
Number of interviews with effort:						0	0	2	3	0	3	1	3	6	5	13	6	9	3	4	9	0	1	0	3	1	2	3	1	1	2	2	0	0	1	84		
Number of interviews without effort:						0	0	0	0	0	0	0	0	0	0	0	0	0	0	0	0	0	0	0	0	0	0	0	0	0	0	0	0	0	0	0	0	
Number of boat-hours:						0.0	0.0	4.2	4.5	0.0	5.8	1.6	10.3	21.5	10.6	30.0	8.0	17.5	6.5	9.5	21.3	0.0	2.8	0.0	8.3	4.0	3.3	5.5	2.0	2.5	4.8	1.3	0.0	0.0	2.3	0.0	187.8	
Catch-per-effort:								6.3	0.0		2.8	11.4	3.2	8.1	8.0	17.4	21.8	15.2	8.9	1.7	13.8		3.3		4.8	3.0	17.8	6.0	0.5	8.4	2.9	0.0		1.3		10.0		

* Lakes not speared during spring 2016
 ** Lakes open for spearing but no effort.

Appendix B. Number of walleye harvested nightly on lakes selected by six Wisconsin Chippewa bands during spring 2016. Also, balance of quota, number of boat-hours, catch per effort (CPE - walleye per boat-hour), number of spearer-nights, number of interviews with effort, and number of interviews without effort.

County	St. Croix Lake	Area (acres)	2016 Quota Balance	2016 Tribal Quota	April 1	April 2	April 3	April 31	April 1	April 2	April 3	April 31	April 1	April 2	April 3	April 31	May 1	May 2	May 3	May 31	Total Harvest	Boat-Hour	Speare CPE
ASHLAND	L. GAILLEE	213	0	0																			
BARRON	BEAR L	1,358	77	99					11													0	
BARRON	BEAVER DAM L	1,112	9	9																		22	4.0
BARRON	BIG DUMMY L	111	9	9																		0	
BARRON	BIG MOON L	191	15	15																		0	
BARRON	DUCK L	100	0	54								34										54	7.8
BARRON	GRANITE L	154	52	64																		12	2.3
BARRON	HORSESHOE L	115	16	16																		0	
BARRON	HORSESHOE L	377	6	6																		0	
BARRON	LCHETEK	770	61	61																		0	
BARRON	LOWER DEVILS L	162	37	37																		0	
BARRON	LOWER TURTLE L	276	30	30																		0	1.2
BARRON	LOWER VERMILLION L	208	17	17																		0	0.0
BARRON	MUD L	577	19	19																		0	
BARRON	POREGAMA L	506	64	64																		0	
BARRON	POSKIN L	150	14	14																		0	
BARRON	PRAIRIE L	1,534	151	151																		141	13.1
BARRON	RED CEDAR L	1,841	0	141								49										0	
BARRON	SAND L	322	6	6																		0	
BARRON	SILVER L	337	0	56																		56	3.7
BARRON	SPRING L	60	14	14																		0	
BARRON	STAPLES L	305	5	5																		0	
BARRON	UPPER DEVILS L	86	1	1																		0	
BARRON	UPPER TURTLE L	438	50	70								20										20	4.3
BURNETT	BIG MCKENZIE L	1,185	48	63								3										15	18.1
BURNETT	CLAM R FL	359	101	101																		0	0.8
BURNETT	DEVILS L	1,001	28	28																		0	
BURNETT	DUNHAM L	243	19	19																		0	
BURNETT	LIPSETT L	393	6	6																		0	1.7
BURNETT	LITTLE YELLOW L	348	77	77																		0	6.7
BURNETT	ROONEY L	322	1	26								10										25	3.5
BURNETT	ROUND L	204	17	17																		0	7.1
BURNETT	SAND L	862	2	34																		0	
BURNETT	YELLOW L	2,287	718	768								32										32	5.1
CHIPPEWA	HOLCOMBE FL	3,890	155	155								19	0									48	26.2
CHIPPEWA	L WISCONSOTA	6,300	286	286																		0	1.7
DOUGLAS	BASS L	126	28	28																		0	
DOUGLAS	BEAR L	49	11	11																		0	
DOUGLAS	BEAUREGARD L	89	21	21																		0	
DOUGLAS	LEADER L	165	37	37																		0	
DUNN	TAINTER L	1,752	185	185																		0	
POLK	BALSAM L	2,054	77	77																		0	3.1
POLK	BEAR L	155	35	35									0									0	0.0
POLK	BIG BUTTERNUT L	378	5	37																		0	3.8
POLK	BIG ROUND L	1,015	154	157								20	12									32	6.5
POLK	HALF MOON L	579	19	19																		3	0.5
POLK	INDIANHEAD FL	776	169	169																		0	
POLK	MAGNOR	231	21	21																		0	
POLK	N PIPE L	58	11	11																		0	
POLK	PIPE L	284	26	26																		0	
POLK	SAND L	187	3	3																		0	
POLK	WAPOGASSET L	1,188	1	95																		0	
SAWYER	SISSABAGAMA L	719	0	64																		64	6.6
ST CROIX	CEDAR L	1,100	0	272																		0	14.2
WASHBURN	BALSAM L	295	17	71																		0	13.9
WASHBURN	BASS L	130	29	29																		272	24.7
WASHBURN	BASS-PATERSON L	188	-1	77								53										54	5.5
WASHBURN	BIG BASS L	203	17	17																		0	8.8
WASHBURN	DUNN L	193	42	43																		0	
WASHBURN	L NANCY	772	4	38																		0	
									34													34	6.0
																						0	5.7

Appendix B. Number of walleye harvested nightly on lakes selected by six Wisconsin Chippewa bands during spring 2016. Also, balance of quota, number of boat-hours, catch per effort (CPE - walleye per boat-hour), number of spearer-nights, number of interviews with effort, and number of interviews without effort.

County	Lake	Area (acres)	2016 Quota Balance	2016 Tribal Quota	Spearer-Nights (1-28)																												Total Harvest	Boat-Hour CPE	Spearer CPE				
WASHBURN	LONG L	3,290	77	578	24	25	26	27	28	29	30	31	April (1-14)														May (1-10)										501	55.9	8.0
WASHBURN	MIDDLE MCKENZIE L	530	0	26																															26	8.5	4.0		
WASHBURN	MINONG FL	1,564	435	435																															0	2.9	0.0		
WASHBURN	SHELL L	2,560	50	372																															322	40.3	6.0		
Number of lakes:					64																																		
Number of walleye:					5,490																													1,908					
Number of spearer-nights: (# of permits)					3,584																																		
Number of interviews with effort:					7																													235					
Number of interviews without effort:					3																													109					
Number of boat-hours:					9.4																													275.5					
Catch-per-effort:					7.3																													6.9					

* Lakes not speared during spring 2016
 ** Lakes open for spearing but no effort.
 *** Lakes opened for muskellunge harvest only.

Appendix C. Total number of walleye harvested and measured per inch group and sexed during spring in 2016. Data arranged alphabetically by tribe, county, and lake.

Bad River		8	11	12	13	14	15	16	17	18	19	20	21	22	23	24	25	26	27	28	29	Total Measured	Total Harvested	Total Inches	Mean Length	Male	Female	Unknown	Total Sexed	
County	Lake																													
BAYFIELD	L OWEN					1	4	2	6	18	19	9	5	1			1					66	66	1,186	18.0	60	2	4	66	
BAYFIELD	NAMEKAGON L	1	4	31	65	109	103	69	26	9	4	2	1					1				445	445	6,667	15.0	401	28	15	444	
BAYFIELD	SISKIWI T L				4	8	3	2	3													20	20	289	14.9	18	2		20	
CHIPPEWA	LONG L	1	2	3	25	100	127	102	84	32	11	5		3	1			3	2			501	501	7,580	15.1	435	47	19	501	
DOUGLAS	BOND L											7	1	2								11	11	228	20.6	10		1	11	
DOUGLAS	WHITEFISH L					4	6	12	38	51	40	13	9	3	3	1			1			161	161	2,854	17.7	88	38	35	161	
IRON	TRUDE L		5	44	94	50	36	12	7	1	2											251	251	3,533	14.1	205	24	22	251	
IRON	TURTLE-FLAMBEAU FL	2	10	29	10	15	6	1	2													75	75	991	13.2	68	3	4	75	
PRICE	SOLBERG L	1	5	53	62	61	39	22	10	3	1	1							1			259	259	3,702	14.3	233	22	4	259	
SAWYER	CONNORS L			3	10	19	14	11	13	12	7	6		1						1		98	98	1,528	15.6	60	16	22	98	
SAWYER	TEAL L	1	8	10	22	13	17	7	3	2	3	1	1	3	3					2		102	102	1,617	15.9	55	20	27	102	
VILAS	CRAB L		5	25	33	33	16	7	2	3			3	1								128	128	1,829	14.3	105	16	7	128	
VILAS	FOREST L			1	2	5	27	50	62	41	12	1	4	1			2					208	208	3,603	17.3	175	31	2	208	
VILAS	HARRIS L		12	17	34	42	25	16	3	7	2	1	1			2	2					164	164	2,414	14.7	139	22	3	164	
VILAS	MAMIE L				3	11	13	9	4	3	2	2	1				2					50	50	777	15.5	32	5	13	50	
VILAS	PRESQUE ISLE L CHAIN	5	33	35	63	42	38	33	20	12	12	2	2	4	3	4	1		1	2	2	312	312	4,707	15.1	262	43	7	312	
	Sub-total	1	12	88	283	544	542	446	364	232	159	76	27	22	11	10	11	7	6	5	3	2,851	2,851	43,514	15.3	2,346	319	185	2,850	

Appendix C. Total number of walleye harvested and measured per inch group and sexed during spring in 2016. Data arranged alphabetically by tribe, county, and lake.

County	Lake	INCH GROUP																											Total Measured	Total Harvested	Total Inches	Mean Length	Males	Females	Unknown	Total Sexed
		8	9	10	11	12	13	14	15	16	17	18	19	20	21	22	23	24	25	26	27	28	29													
SAWYER	BARBER L					1	5	2	3	2	2																19	19	317	16.7	15	4		19		
SAWYER	DURPHEE L													1	13	10	6	10	1								42	42	753	17.9	37	3	2	42		
SAWYER	GRINDSTONE L														1	106	86	81	38	18	8	13	5	1	4		493	493	8,403	17.0	385	79	29	483		
SAWYER	L CHETAC	1		1	7	10	30	35	28	24	7	3	3	2	2	1										156	157	2,373	15.1	141	3	13	157			
SAWYER	L CHIPPEWA	3	2	23	48	85	166	281	256	157	136	73	24	22	20	22	26	14	11	1	3					1370	1373	22,981	16.7	1026	200	147	1,373			
SAWYER	LAC COURTE OREILLES					2	8	31	42	44	76	75	60	33	15	11	7	3	2	2						412	412	7,031	17.1	349	38	25	412			
SAWYER	LITTLE ROUND L																									4	4	4	78	18.6	2	1	1	4		
SAWYER	LOST LAND L																									16	18	267	18.0	7	3	6	16			
SAWYER	ROUND L	1				4	13	42	63	78	26	26	15	14	9	7	5	7	4	1					314	315	5,060	16.1	256	51	8	315				
SAWYER	SAND L					9	13	35	78	108	80	38	9	1												372	372	5,703	15.3	249	79	44	372			
SAWYER	SISSABAGAMA L					1	1	2	13	13	21	19	13	3	2	5	1									95	95	1,809	16.9	84	5	6	95			
SAWYER	SPIDER L					4	6	13	19	27	17	14	11	4	4	6	2	3	3	1						134	134	2,348	17.5	85	32	17	134			
SAWYER	WHITFISH L					2	4	13	28	19	18	6	2	2												100	100	1,760	17.6	66	17	17	100			
SAWYER	WINDFALL L					1	3	3	22	22	4															55	55	813	14.8	54		1	55			
SAWYER	WINDSO L									2	1	18	28	20	15	2	1	2								91	91	1,647	18.1	73	17	1	91			
WASHBURN	BIRCH L														5	3	7	6	6	2	1					30	30	567	18.9	28	1		30			
WASHBURN	LONG L					1	1	10	46	148	202	118	25	13	5											578	578	10,075	17.4	539	29	10	578			
WASHBURN	STONE L									2	6	11	4	6	2	1	3									35	35	571	16.3	28	1	6	35			
	Sub-Total	1	4	5	50	113	266	508	750	836	695	483	239	102	71	57	46	42	29	15	5	3	3	1	4,316	4,321	72,376.4	16.8	3,425	563	333	4,321				

Appendix C. Total number of walleye harvested and measured per inch group and sexed during spring in 2016. Data arranged alphabetically by tribe, county, and lake.

Lac du Flambeau		INCH GROUP																													Total Measured	Total Harvested	Total Inches	Mean Length	Male	Female	Unknown	Total Scaled
County	Lake	6	7	8	9	10	11	12	13	14	15	16	17	18	19	20	21	22	23	24	25	26	27	28	29													
VILAS	ISLAND L						15	26	51	57	31	18	12	2	2		1	1	1	2				1					220	220	3,205	14.6	189	23	8	220		
VILAS	L LAURA						3	22	26	23	19	1	3	1	1													100	120	1,411	14.1	87	4	9	100			
VILAS	LITTLE ARBOR VITAE L						1		4	16	31	13	3	4	5													80	80	1,288	16.1	71	3	6	80			
VILAS	LITTLE JOHN L							4	17	37	19	9	1	2														89	89	1,308	14.7	77	12		89			
VILAS	LITTLE ST GERMAIN L					3	7	2	1	2	1	2	2	1	1													50	50	1,033	20.7	2	7	41	50			
VILAS	LITTLE STAR L						5	6	14	6	10	11	2	1														55	55	798	14.5	47		8	55			
VILAS	L VNX L						6	14	13	7	1				1													42	42	540	12.8	37		5	42			
VILAS	MANITOWISH L					1	3	11	20	10	15	5	2	1		2												70	70	1,004	14.3	58	4	8	70			
VILAS	OTTER L						2	5	11	10	10	5	1		1													44	44	673	15.3	27		17	44			
VILAS	OXBOW L			1	12	36	23	19	14	9	4	4	4	7	3	2	1	2	1	1	2							141	141	1,965	13.9	84	27	30	141			
VILAS	PALMER L										1	3	3	9	1													21	21	412	19.6	13	4	4	21			
VILAS	PAPOUSEL						1	1	4	18	21	4	6	6	8		4											78	78	1,225	15.7	61	14	3	78			
VILAS	PLUM L						2	8	16	21	37	47	28	15	6	2	1	1	1	1	2							191	249	3,118	16.3	144	27	20	191			
VILAS	RAZORBACK L						16	30	39	38	10	6	2	1	1		1											145	211	2,139	14.8	106	16	23	145			
VILAS	REST L						2	11	13	13	14	8	1	5	3	4	2	1										78	78	1,123	14.4	46	30	2	78			
VILAS	SCATTERING RICE L						1					2	2	2	2	1												11	11	192	17.4	3		8	11			
VILAS	SHERMAN L						2	2	4	13	23	16	3	1	3	1												68	68	914	13.4	42	4	22	68			
VILAS	SNIPE L						3	8	19	32	62	9	2		2													200	273	2,699	13.5	40	20	140	200			
VILAS	SPARKLING L										2	1	1		4													14	14	262	18.7		3	11	14			
VILAS	SPIDER L						1	9	15	11	7	7	2	1	1	3	1											60	60	918	15.3	40	12	8	60			
VILAS	SQUAW L						8	34	40	40	28	12	6	1		1												173	173	2,285	13.3	130	41	2	173			
VILAS	STAR L						5	23	42	56	43	20	10	10	4	2												233	513	3,335	14.3	163	23	2	189			
VILAS	STONE L						6	6	5	1	3	1	1		1													25	25	322	12.9	15		10	25			
VILAS	TROUT L						1	2	4	11	30	36	43	58	34	11	15	13	11	10	5	9	3	5	2	2		305	430	5,571	18.2	132	53	121	306			
VILAS	UPPER BUCKATABON L																											5	5	113	22.7	2	1	2	5			
VILAS	UPPER GRESHAM L																											27	27	470	17.4	26	1		27			
VILAS	W BAY L						1	4	19	24	35	30	6	2	3	1	1	2										130	141	1,910	14.7	111	10	9	130			
VILAS	WHITE SAND L							4	8	6	7	11	8	4	7	1	1											59	59	867	16.4	15	8	36	59			
VILAS	WILD RICE L						1	1	4	8	8	5	7	1	3	1	2	4	1	1								48	48	735	15.3	9	2	37	48			
VILAS	WILDCAT L																											16	16	254	15.3	3	1	12	16			
Sub-total:		1	7	6	48	207	707	1,474	1,729	1,706	1,410	998	806	500	286	162	131	107	80	69	44	34	25	12	7	10,546	15,979	159,074	15.1	7,487	1,269	1,722	10,478					

Appendix C. Total number of walleye harvested and measured per inch group and sexed during spring in 2016. Data arranged alphabetically by tribe, county, and lake.

Sokaogon (Mole Lake)		INCH GROUP																												Total	Mean	Female	Unknown	Total
County	Lake	8	9	10	11	12	13	14	15	16	17	18	19	20	21	22	23	24	25	26	27	28	29	Measured	Harvested	Inches	Length	Male	Sexed					
FLORENCE	FAY L														2	1		1						4	4	90	22.4	4	4					
FLORENCE	PATTEN L							3	11	6	4	8	2	2	2										38	98	17.2	33	4	37				
FLORENCE	BUTTERNUT L							26	23	35	67	65	31	6	10	6	2	2							336	336	5.644	16.8	300	29	7	336		
FLORENCE	CRANEL							1	1	1	2														7	7	17.7	6	1	7				
FLORENCE	LUCERNE							5	7	15	20	13	6	3	2	1	1	1							82	82	14.17	17.3	66	6	10	82		
FLORENCE	L METONGA							16	24	120	161	77	39	45	25	15	9	3	3	2	3	3			604	866	10.706	17.7	459	81	61	601		
FLORENCE	LILY L							7	16	42	29	6	8	2	1	1	3								142	142	2.192	15.4	121	16	5	142		
FLORENCE	ROBERTS L							1	3	25	33	26	6	4	1		2								113	113	1.956	17.3	91	6	16	113		
FLORENCE	STEVENS L							1	3	5	4	2	5	3	5	3	1	1	1						38	38	7.04	18.5	27	2	9	38		
FLORENCE	ENTERPRISE L							1	7	27	18	16	8	5	2										112	112	1.585	14.1	99	4	9	112		
LANGLADE	OTTER L									5	6	7	9	2	3	1	1	1							34	34	6.45	19.0	28	5	1	34		
LANGLADE	SAWYER L											1	1												6	6	121	20.2	3	3	3	6		
OCONTO	WHEELER L																								32	32	592	18.2	23	1	8	32		
ONEIDA	BIG FORK L																								162	162	1.932	11.9	135	9	17	161		
ONEIDA	BIG L																								143	143	1.822	12.7	134	7	2	143		
ONEIDA	CRESCENT L																								269	613	3.897	14.5	237	15	17	269		
ONEIDA	GEORGE L																								128	128	1.768	13.8	95	21	4	120		
ONEIDA	L JULIA (RHINELANDER)																								40	40	6.17	15.4	31	3	6	40		
ONEIDA	LITTLE FORK L																								77	77	900	11.7	69	4	4	77		
ONEIDA	LONG L																								129	129	1.678	13.0	111	11	7	129		
ONEIDA	PELICAN L																								19	19	299	15.7	18	1		19		
ONEIDA	PELICAN L																								666	666	10.559	15.9	629	23	14	666		
ONEIDA	PLANTING GROUND L																								121	175	1.850	13.6	101	10	10	121		
VILAS	BIG SAND L																								85	85	1.431	16.8	76	3	6	85		
VILAS	CATFISH L																								162	219	2.411	14.9	139	18	5	162		
VILAS	CRANBERRY L																								207	207	2.871	14.4	167	37	3	207		
VILAS	KENTUCK L																								38	38	668	18.5	19	15	2	38		
VILAS	LAC VIEUX DESERT																								95	95	1.821	19.2	73	16	6	95		
VILAS	LONG L																								25	25	472	18.9	12	4	9	25		
VILAS	TWIN L CHAIN																								387	1054	5.728	14.8	330	30	27	387		
	Sub-total:	4	38	149	260	394	554	580	452	481	503	353	189	122	77	49	39	24	13	7	6	4	1	4,299	5,883	67,037	15.6	3,636	381	268	4,296			

Appendix C. Total number of walleye harvested and measured per inch group and sexed during spring in 2016. Data arranged alphabetically by tribe, county, and lake.

Red Cliff		8	9	10	11	12	13	14	15	16	17	18	19	20	21	22	23	24	25	26	27	Total Measured	Total Harvested	Total Inches	Mean Length	Male	Female	Unknown	Total Sexed
County	Lake																												
BAYFIELD	DIAMOND L										1	1	4	4	7	12	6	1	1		1	33	38	832	21.9	6	29	3	38
BAYFIELD	L OWEN						1	3	3	11	17	21	13	1	4	2	1			2	79	79	1,449	18.3	69	10		79	
BAYFIELD	LONG L				1							1										2	2	31	15.3	1		1	2
BAYFIELD	MIDDLE EAU CLAIRE L	1			2	1	7	12	25	26	39	17	9	6	7	1	1	2	1			156	263	2,681	17.1	132	19	6	157
BAYFIELD	NAMEKAGON L				3	16	76	135	128	70	34	17	11	4		2	1					495	495	7,573	15.3	437	48	10	495
BAYFIELD	PIKE L CHAIN				1	5	24	27	56	63	46	32	10	7	3	5	2	2				283	283	4,681	16.5	211	62	10	283
BAYFIELD	UPPER EAU CLAIRE L					1		3	14	25	31	22	27	8	2	4	2					139	167	2,500	18.0	112	23	4	139
DOUGLAS	AMNICON L										1	3	2				1		1			8	8	161	20.1	6	2		8
DOUGLAS	L MINNESUNG	1								2	1	3	2	1	1	1	1					12	13	241	18.6	6	4	3	13
DOUGLAS	L NEBAGAMON				1		5	9	19	15	9	12	5	2	1	2	1	2				82	83	1,400	16.9	71	10	2	83
DOUGLAS	LOWER EAU CLAIRE L				1	2	9	12	15	19	23	42	28	4	10	10	1	2				177	178	3,188	17.9	190	37	10	177
DOUGLAS	UPPER ST CROIX L					3	14	32	34	32	10	3	3	2		2				1		136	136	2,132	15.7	125	10	1	136
IRON	PINE L				1	3	4	1														8	9	109	12.1	6	2	1	9
SAWYER	NELSON L		1	4	7	3	6	13	13	23	12	11	9	2	2	4	3	2		1		111	116	1,916	16.5	95	20	1	116
WASHBURN	MINONG FL						1	1	1	1	2			1								7	7	115	16.4	3	4		7
	Subtotal:	2	1	7	17	35	144	247	306	287	226	185	123	42	37	45	20	11	3	4	1	1,793	1,877	28,008	16.7	1,410	260	52	1,742

Appendix C. Total number of wildye harvested and measured per inch group and sexed during spring in 2018. Data arranged alphabetically by tribe, county, and lake.

St. Croix County	Lake	6	7	8	9	10	11	12	13	14	15	16	17	18	19	20	21	22	23	24	25	26	27	28	29	30	Total Measured	Total Harvested	Total Inches	Mean Length	Males	Females	Unsexed	Total Scaled
BARRON	BEAR L					1																					22	22	359	16.3	17	5		22
BARRON	DUCK L																										54	54	996	17.7	48	0		64
BARRON	GRANITE L																										12	12	188	15.7	11	1		12
BARRON	RED CEDAR L																										134	141	2,176	16.2	130	4		134
BARRON	SILVER L																										56	56	963	17.6	52	3		56
BARRON	UPPER TURTLE L																										20	20	355	17.7	15	5		20
BURNETT	BIG MCKENZIE L																										15	15	272	18.1	12	2		15
BURNETT	ROONEY L																										25	25	459	18.3	21	4		25
BURNETT	SAND L																										32	32	508	16.5	30	1		32
BURNETT	YELLOW L																										48	48	776	16.2	25	16		48
POLK	BIG BUTTERNUT L																										32	32	565	17.7	21	11		32
POLK	BIG ROUND L																										3	3	50	16.5	3			3
POLK	WAGOASSET L																										94	94	1,411	15.0	83	1		94
SAWYER	SSSABAGAMA L																										84	64	1,080	16.9	55	8		64
ST CROIX	CEDAR L																										272	272	4,958	18.6	255	15		272
WASHBURN	BALSAM L																										84	54	877	16.2	45	9		64
WASHBURN	BASS-PATTERSON L																										78	78	1,194	15.3	88	10		78
WASHBURN	DUNN L																										1	1	23	22.8				1
WASHBURN	L NANCY																										34	34	580	16.5	23	1		34
WASHBURN	LONG L																										501	501	8,810	17.6	387	85		501
WASHBURN	MIDDLE MCKENZIE L																										28	28	488	18.6	19	7		28
WASHBURN	SHELL L																										322	322	4,856	15.1	239	44		322
	Sub-total					13	25	77	125	208	282	354	377	503	103	31	38	12	13	11	6	7	4	3	1	1,889	1,808	31,524	16.6	1,568	248		1,889	
TOTAL: ALL TRIBES		1	8	13	91	383	1,147	2,376	3,362	3,769	3,656	3,318	2,838	1,881	1,018	486	378	281	200	188	102	73	45	25	0	1	25,687	32,617	402,535	12.3	19,873	3,061		25,578

Appendix D. Number of walleye per inch group taken during spring spearing seasons from 1985 - 2016.

Inch Group	Number of walleye in:																		
	1985	1986	1987	1988	1989	1990	1991	1992	1993	1994	1995	1996	1997	1998	1999	2000			
5									1				1	2					
6		1					1	1	3	2			2	2					
7				3	1	4	4	3	4	12	2	6	16	25	5	2			
8				10	4	14	36	34	45	63	32	39	79	104	20	33			
9	2	3	17																
10	5	49	123	121	60	183	229	243	245	386	219	233	372	505	162	169			
11	31	358	558	678	306	649	957	957	905	1,186	1,311	1,026	1,230	1,817	989	961			
12	140	680	1,282	1,688	925	1,513	1,979	2,444	2,101	2,170	2,955	2,532	2,262	3,258	2,861	2,541			
13	265	928	1,892	2,755	1,684	2,370	2,582	3,507	3,636	3,110	4,113	3,879	3,242	3,951	4,598	4,213			
14	286	1,068	2,133	3,289	2,222	2,917	2,777	3,252	4,032	3,666	4,360	4,305	3,570	3,890	4,548	5,190			
15	293	985	1,895	2,951	2,154	2,856	2,543	2,375	3,111	3,368	3,768	3,867	3,390	3,281	3,364	4,759			
16	247	939	1,666	2,311	1,919	2,295	2,031	1,696	1,993	2,517	2,703	2,605	2,548	2,443	2,286	3,235			
17	172	801	1,374	1,658	1,390	1,862	1,687	1,207	1,323	1,796	1,756	1,664	1,580	1,819	1,643	2,294			
18	145	458	1,113	1,297	1,010	1,288	1,216	878	812	1,120	1,159	970	1,129	1,094	1,003	1,402			
19	118	255	811	932	634	932	811	562	589	850	729	617	639	706	599	831			
20	33	149	513	596	328	556	590	261	308	383	440	358	378	338	307	376			
21	25	72	259	316	210	307	303	199	218	267	238	240	237	260	258	275			
22	18	50	148	214	109	202	249	171	148	205	195	156	186	183	193	208			
23	18	23	116	134	76	160	151	129	120	189	164	120	142	134	165	154			
24	11	9	86	124	67	100	111	85	101	145	158	111	105	90	93	119			
25	7	10	76	89	48	107	102	66	80	98	109	97	98	81	87	82			
26	9		57	75	45	71	86	65	54	91	80	64	85	91	78	61			
27	10	3	42	56	31	63	46	42	33	55	57	51	56	53	58	38			
28	5	1	28	32	18	30	39	25	27	30	36	37	32	49	27	24			
29	8		25	30	8	15	15	17	12	12	16	15	13	22	16	8			
30	11		8	9	3	5	6	6	1	5	3	6	4	5	9	8			
31	6		2	2	2	1	1	1	1	1	1	1	1	1	1	1			
32	2																		
33	1																		
Total No. Measured:	1,868	6,842	14,224	19,368	13,254	18,500	18,551	18,226	19,903	21,726	24,605	22,999	21,399	24,204	23,371	26,984			
Total Length:	30,382	106,051	226,789	306,926	211,645	295,047	291,543	275,331	301,713	335,322	375,476	348,750	327,444	363,297	354,052	415,478			
Average Length:	16.3	15.5	15.9	15.8	16.0	15.9	15.7	15.1	15.2	15.4	15.3	15.2	15.3	15.0	15.1	15.4			
Total No. Speared:	2,761	6,940	21,321	25,969	16,054	25,348	23,018	21,188	24,532	25,922	30,249	28,327	24,002	27,218	26,105	30,367			
Percent Measured:	68%	99%	67%	75%	83%	73%	81%	86%	81%	84%	81%	81%	89%	89%	90%	89%			
≥20 inches	164	317	1,360	1,675	945	1,617	1,688	1,067	1,102	1,480	1,498	1,256	1,337	1,307	1,293	1,354			
% of total	8.78%	4.63%	9.56%	8.65%	7.13%	8.74%	9.15%	5.95%	5.54%	6.81%	6.09%	5.46%	6.25%	5.40%	5.53%	5.02%			
≥25 inches	59	14	238	291	155	292	294	222	207	291	303	271	289	302	277	222			
% of total	3.16%	0.20%	1.67%	1.50%	1.17%	1.58%	1.58%	1.22%	1.04%	1.34%	1.23%	1.18%	1.35%	1.25%	1.19%	0.82%			

Appendix D. Number of walleye per inch group taken during spring spearing seasons from 1985 - 2016.

Inch Group	Number of walleye in:														32 Year Total	Percent of Total	Cumulative Percent		
	2001	2002	2003	2004	2005	2006	2007	2008	2009	2010	2011	2012	2013	2014				2015	2016
5																	4	0.0%	0.0%
6	2																15	0.0%	0.0%
7	16																64	0.0%	0.0%
8	117	2	5	5	2	5	10	8	17	5	19	19	10	6	16	13	355	0.0%	0.1%
9	738	14	37	82	61	35	70	81	59	20	88	88	53	46	137	91	2,203	0.3%	0.4%
10	1,930	177	177	424	413	295	325	441	563	197	302	302	395	209	516	393	10,587	1.5%	1.9%
11	3,109	973	836	1,299	1,483	1,207	1,091	1,350	1,749	987	831	831	1,133	924	1,371	1,147	34,945	5.0%	6.9%
12	3,440	2,360	2,317	2,504	2,767	2,924	2,723	2,532	3,213	2,336	2,105	2,105	2,059	1,929	2,743	2,376	72,585	10.4%	17.4%
13	3,560	3,371	3,716	3,431	3,350	3,713	4,057	3,568	4,076	3,454	3,438	3,438	2,798	2,950	4,014	3,362	104,214	15.0%	32.4%
14	2,794	3,987	4,323	4,158	3,764	3,979	4,634	4,245	4,460	4,118	4,405	4,405	3,227	3,391	4,457	3,769	116,732	16.8%	49.2%
15	1,970	3,727	4,142	3,888	3,729	3,839	4,320	3,708	4,088	3,867	4,847	4,847	3,378	3,085	4,455	3,686	106,581	15.3%	64.5%
16	1,175	2,928	3,299	3,317	2,746	2,837	3,222	3,038	2,917	3,335	3,981	3,981	3,273	2,825	3,749	3,318	82,336	11.8%	76.4%
17	753	2,108	2,367	2,280	1,132	1,880	2,218	2,135	2,324	1,892	2,700	2,700	2,442	2,184	2,960	2,839	59,499	8.6%	84.9%
18	268	1,258	1,399	1,364	1,454	1,290	1,488	1,386	1,568	1,317	1,846	1,846	1,478	1,389	1,705	1,881	38,654	5.6%	90.5%
19	220	787	859	889	926	885	924	861	942	806	1,154	1,154	859	805	989	805	24,444	3.5%	94.0%
20	152	326	397	371	444	389	468	327	390	310	408	408	353	400	572	486	12,076	1.7%	95.7%
21	108	255	303	241	338	255	241	260	273	308	302	302	211	273	407	376	8,201	1.2%	96.9%
22	85	176	198	165	242	222	238	182	205	174	207	207	138	202	278	281	5,851	0.8%	97.8%
23	63	126	150	138	177	176	206	116	170	190	177	177	96	140	197	208	4,440	0.6%	98.4%
24	57	105	128	104	121	135	127	111	129	82	134	134	79	134	170	168	3,432	0.5%	98.9%
25	37	90	74	72	88	91	124	96	127	115	133	133	47	105	109	102	2,734	0.4%	99.3%
26	15	61	84	74	79	73	89	63	52	106	74	74	36	76	75	73	2,091	0.3%	99.6%
27	7	48	54	41	57	73	41	43	68	54	67	67	29	48	58	46	1,481	0.2%	99.8%
28	3	22	21	26	27	25	28	16	24	29	35	35	34	25	24	25	844	0.1%	99.9%
29		17	20	9	16	21	17	7	12	16	16	16	11	9	9	9	425	0.1%	100.0%
30		3	6	3	7	3	5	1	5	4	5	5	2	6	1	1	147	0.0%	100.0%
31			1	2		1			1		2	2		4			30	0.0%	100.0%
32			1														6	0.0%	100.0%
33																	1	0.0%	100.0%
Total No. Measured:	20,639	25,931	24,924	24,865	24,427	24,356	26,778	24,578	26,739	30,014	23,000	27,265	22,148	21,575	29,027	25,667	694,957	100%	
Total Length:	320,102	354,158	387,747	382,060	376,457	373,918	413,916	375,756	408,035	456,851	353,811	428,869	343,260	337,926	450,447	402,535	10,731,093		
Average Length:	15.5	15.4	15.6	15.4	15.4	15.4	15.5	15.3	15.3	15.2	15.4	15.7	15.5	15.7	15.5	15.7	15.4		
Total No. Speared:	22,743	25,543	27,502	27,546	26,877	27,627	30,700	27,881	32,201	34,156	29,730	32,311	28,986	27,561	38,535	32,617	831,237		
Percent Measured:	91%	90%	91%	90%	91%	89%	87%	88%	83%	88%	77%	84%	76%	78%	75%	79%	84%		
≥20 inches:	527	1,229	1,447	1,244	1,598	1,464	1,684	1,222	1,494	1,547	1,130	1,560	1,036	1,422	1,900	1,775	41,759		
% of total ≥25 inches:	2.55%	5.36%	5.81%	5.09%	6.54%	6.01%	6.33%	4.97%	5.59%	5.15%	4.91%	5.72%	4.68%	6.59%	6.55%	6.92%	6.0%		
25 inches:	62	241	271	225	276	287	304	226	309	324	211	332	159	273	276	256	7,759		
% of total:	0.30%	1.05%	1.09%	0.90%	1.13%	1.18%	1.14%	0.92%	1.16%	1.08%	0.92%	1.22%	0.72%	1.27%	0.95%	1.00%	1.1%		

Appendix G. Number, average length (inches), and harvest per acre of bass (BAS) largemouth (LMB) and smallmouth (SMB) bass and northern pike (NOP) for various lakes during spring spearing 2016. Data sorted by tribe, county, and lake.

Tribe	County	Lake	Area	Species	Number Harvested	Number Measured	Total Inches	Average Length	Number Per Acre
BRV	DOUGLAS	WHITEFISH L	832	BAS	2	2	32.1	16.1	0.0024
LDF	LINCOLN	JERSEY CITY FL	433	BAS	1	1	12.3	12.3	0.0023
LDF	ONEIDA	BUCKSKIN L	634	BAS	1	1	16	16.0	0.0016
LDF	ONEIDA	MINOCQUA L	1360	BAS	1	1	14.5	14.5	0.0007
LDF	VILAS	BIG ST GERMAIN L	1617	BAS	1	1	19	19.0	0.0006
LDF	VILAS	CLEAR L	238	BAS	2	2	25	12.5	0.0084
LDF	VILAS	SNIPE L	239	BAS	1	1	12	12.0	0.0042
MLK	ONEIDA	L JULIA (RHINELANDER)	238	BAS	1	1	16.2	16.2	0.0042
RCF	BAYFIELD	DIAMOND L	341	BAS	4	4	56.7	14.2	0.0117
RCF	DOUGLAS	AMNICON L	426	BAS	1	1	8.8	8.8	0.0023
Total:					15	15	212.6	14.2	0.0039
BRV	DOUGLAS	BOND L	292	LMB	10	10	149.7	15.0	0.0342
BRV	DOUGLAS	WHITEFISH L	832	LMB	2	2	31.7	15.9	0.0024
LCO	SAWYER	LAC COURTE OREILLES	5039	LMB	1	1	16.9	16.9	0.0002
LCO	SAWYER	SAND L	928	LMB	1	1	16.2	16.2	0.0011
LDF	ONEIDA	BEARSKIN L	400	LMB	1	1	17.2	17.2	0.0025
LDF	VILAS	BALLARD L	505	LMB	1	1	21.4	21.4	0.0020
LDF	VILAS	BIG ARBOR VITAE L	1090	LMB	7	7	104.2	14.9	0.0064
LDF	VILAS	BIG L (BOULDER JCT)	835	LMB	1	1	16.1	16.1	0.0012
LDF	VILAS	BIG ST GERMAIN L	1617	LMB	1	1	15.9	15.9	0.0006
LDF	VILAS	CLEAR L	555	LMB	1	1	15	15.0	0.0018
LDF	VILAS	LITTLE ST GERMAIN L	980	LMB	1	1	17.5	17.5	0.0010
MLK	FLORENCE	PATTEN L	255	LMB	1	0	-	-	0.0039
MLK	FOREST	CRANE L	337	LMB	2	0	-	-	0.0059
MLK	VILAS	KENTUCK L	957	LMB	1	0	-	-	0.0010
MLK	VILAS	LAC VIEUX DESERT	4300	LMB	1	0	-	-	0.0002
RCF	BAYFIELD	LONG L	263	LMB	1	1	17	17.0	0.0038
RCF	BAYFIELD	MIDDLE EAU CLAIRE L	902	LMB	4	4	58.7	14.7	0.0044
RCF	DOUGLAS	LOWER EAU CLAIRE L	802	LMB	2	2	31.5	15.8	0.0025
STC	BARRON	DUCK L	100	LMB	1	1	11.5	11.5	0.0100
STC	BARRON	GRANITE L	154	LMB	1	1	16.3	16.3	0.0065
STC	BARRON	SILVER L	337	LMB	1	1	14.4	14.4	0.0030
STC	BARRON	UPPER TURTLE L	438	LMB	3	3	43.2	14.4	0.0068
STC	BURNETT	BENOIT L	279	LMB	3	3	43.7	14.6	0.0108
STC	BURNETT	BIG MCKENZIE L	1185	LMB	7	7	99	14.1	0.0059
STC	BURNETT	LITTLE YELLOW L	348	LMB	9	9	126.6	14.1	0.0259
STC	BURNETT	SAND L	962	LMB	1	1	12.7	12.7	0.0010
STC	BURNETT	YELLOW L	2287	LMB	15	15	248.4	16.6	0.0066
STC	POLK	BIG ROUND L	1015	LMB	2	2	26.5	13.3	0.0020
STC	POLK	BONE L	1781	LMB	2	2	31	15.5	0.0011
STC	POLK	WAGOASSET L	1186	LMB	1	1	9.7	9.7	0.0008
STC	ST CROIX	CEDAR L	1100	LMB	2	2	36.4	18.2	0.0018
STC	WASHBURN	LONG L	3290	LMB	5	5	70.3	14.1	0.0015
STC	WASHBURN	MIDDLE MCKENZIE L	530	LMB	38	38	584.1	15.4	0.0717
STC	WASHBURN	SHELL L	2580	LMB	16	16	224.9	14.1	0.0062
Total:					146	141	2,127.7	15.1	0.0070
BRV	DOUGLAS	WHITEFISH L	832	SMB	1	1	13.8	13.8	0.0012
LCO	SAWYER	GRINDSTONE L	3111	SMB	1	1	14.5	14.5	0.0003
LCO	SAWYER	WHITEFISH L	786	SMB	1	1	13.8	13.8	0.0013
LCO	WASHBURN	LONG L	3290	SMB	2	2	26.1	13.1	0.0006
LDF	LINCOLN	RICE R FL CHAIN	3764	SMB	1	1	16.9	16.9	0.0003
LDF	ONEIDA	TOMAHAWK L	238	SMB	1	1	14.1	14.1	0.0042
LDF	ONEIDA	WILLOW FL	5135	SMB	3	3	51.9	17.3	0.0006
LDF	VILAS	BIG ARBOR VITAE L	1090	SMB	1	1	19.2	19.2	0.0009
LDF	VILAS	BIG MUSKELLUNGE L	930	SMB	7	7	144.6	20.7	0.0075

Appendix G. Number, average length (inches), and harvest per acre of bass (BAS) largemouth (LMB) and smallmouth (SMB) bass and northern pike (NOP) for various lakes during spring spearing 2016. Data sorted by tribe, county, and lake.

Tribe	County	Lake	Area	Species	Number Harvested	Number Measured	Total Inches	Average Length	Number Per Acre
LDF	VILAS	BIG ST GERMAIN L	1617	SMB	2	2	40.6	20.3	0.0012
LDF	VILAS	LITTLE ST GERMAIN L	980	SMB	5	5	70	14.0	0.0051
LDF	VILAS	SNIFE L	239	SMB	1	1	20.5	20.5	0.0042
LDF	VILAS	WILD RICE L	379	SMB	1	1	11	11.0	0.0026
MLK	FOREST	BUTTERNUT L	1292	SMB	2	0	-	-	0.0015
MLK	FOREST	L LUCERNE	1026	SMB	1	0	-	-	0.0010
MLK	ONEIDA	CRESCENT L	612	SMB	3	0	-	-	0.0049
MLK	ONEIDA	PELICAN L	3585	SMB	6	0	-	-	0.0017
MLK	VILAS	KENTUCK L	957	SMB	1	0	-	-	0.0010
RCF	BAYFIELD	LONG L	263	SMB	1	1	16.6	16.6	0.0038
RCF	BAYFIELD	PIKE L CHAIN	714	SMB	3	3	40.9	13.6	0.0042
STC	BURNETT	BIG MCKENZIE L	1185	SMB	1	1	13.3	13.3	0.0008
STC	BURNETT	YELLOW L	2287	SMB	3	3	52.2	17.4	0.0013
STC	WASHBURN	LONG L	3290	SMB	3	3	48.3	16.1	0.0009
STC	WASHBURN	SHELL L	2580	SMB	30	30	465.6	15.5	0.0116
Total:					81	68	1,093.9	16.1	0.0026
BRV	BAYFIELD	NAMEKAGON L	3227	NOP	1	1	22.9	22.9	0.0003
LCO	SAWYER	DURPHEE L	193	NOP	2	2	37.7	18.9	0.0104
LCO	SAWYER	GRINDSTONE L	3111	NOP	1	1	39	39.0	0.0003
LCO	SAWYER	L CHIPPEWA	15300	NOP	1	1	22.7	22.7	0.0001
LCO	SAWYER	ROUND L	3054	NOP	1	1	36.5	36.5	0.0003
LCO	SAWYER	SAND L	928	NOP	5	5	132.6	26.5	0.0054
LDF	LINCOLN	JERSEY CITY FL	433	NOP	1	1	11.6	11.6	0.0023
LDF	LINCOLN	RICE R FL CHAIN	3764	NOP	4	4	98.2	24.6	0.0011
LDF	ONEIDA	BOOTH L	207	NOP	1	1	23.9	23.9	0.0048
LDF	ONEIDA	SQUIRREL L	1317	NOP	1	1	30	30.0	0.0008
LDF	ONEIDA	TOMAHAWK L CHAIN	3552	NOP	1	1	33.5	33.5	0.0003
LDF	VILAS	BALLARD L	505	NOP	1	1	32.3	32.3	0.0020
LDF	VILAS	BIG MUSKELLUNGE L	930	NOP	2	2	45.8	22.9	0.0022
LDF	VILAS	LITTLE ST GERMAIN L	980	NOP	1	1	23.6	23.6	0.0010
LDF	VILAS	PLUM L	1033	NOP	3	3	86.7	28.9	0.0029
MLK	ONEIDA	CRESCENT L	612	NOP	3	0	-	-	0.0049
RCF	BAYFIELD	DIAMOND L	341	NOP	2	2	57	28.5	0.0059
RCF	BAYFIELD	LONG L	263	NOP	4	4	87.3	21.8	0.0152
RCF	BAYFIELD	MIDDLE EAU CLAIRE L	902	NOP	10	10	271.6	27.2	0.0111
RCF	DOUGLAS	L MINNESUING	432	NOP	1	1	21.8	21.8	0.0023
RCF	DOUGLAS	LOWER EAU CLAIRE L	802	NOP	1	1	31.3	31.3	0.0012
STC	BURNETT	BENOIT L	279	NOP	2	2	52.4	26.2	0.0072
STC	BURNETT	LITTLE YELLOW L	348	NOP	1	1	20	20.0	0.0029
STC	BURNETT	YELLOW L	2287	NOP	6	6	160.8	26.8	0.0026
STC	POLK	BIG BUTTERNUT L	378	NOP	2	2	58.7	29.4	0.0053
STC	WASHBURN	MIDDLE MCKENZIE L	530	NOP	3	3	92.9	31.0	0.0057
STC	WASHBURN	SHELL L	2580	NOP	1	1	28.1	28.1	0.0004
Total:					62	59	1,558.9	26.4	0.0037

Appendix H. Number of bees per inch group (largemouth and smallmouth) taken during spring seeping seasons from 1955 - 2016.

Inch Group	Number of bees in:																												Percent of Total						
	1955	1956	1957	1958	1959	2000	2001	2002	2003	2004	2005	2006	2007	2008	2009	2010	2011	2012	2013	2014	2015	2016													
5	1	1	1	1	1	1	1	1	1	1	1	1	1	1	1	1	1	1	1	1	1	1	1	1	1	1	1	1	1	1	1	1	0	0.0%	
6	1	1	1	1	1	1	1	1	1	1	1	1	1	1	1	1	1	1	1	1	1	1	1	1	1	1	1	1	1	1	1	2	0.0%		
7	1	1	1	1	1	1	1	1	1	1	1	1	1	1	1	1	1	1	1	1	1	1	1	1	1	1	1	1	1	1	1	1	4	0.1%	
8	1	1	1	1	1	1	1	1	1	1	1	1	1	1	1	1	1	1	1	1	1	1	1	1	1	1	1	1	1	1	1	1	5	0.1%	
9	1	1	1	1	1	1	1	1	1	1	1	1	1	1	1	1	1	1	1	1	1	1	1	1	1	1	1	1	1	1	1	13	0.2%		
10	1	1	1	1	1	1	1	1	1	1	1	1	1	1	1	1	1	1	1	1	1	1	1	1	1	1	1	1	1	1	1	43	0.7%		
11	1	1	1	1	1	1	1	1	1	1	1	1	1	1	1	1	1	1	1	1	1	1	1	1	1	1	1	1	1	1	15	1.9%			
12	1	1	1	1	1	1	1	1	1	1	1	1	1	1	1	1	1	1	1	1	1	1	1	1	1	1	1	1	1	1	1	115	1.9%		
13	1	1	1	1	1	1	1	1	1	1	1	1	1	1	1	1	1	1	1	1	1	1	1	1	1	1	1	1	1	1	1	415	6.8%		
14	1	1	1	1	1	1	1	1	1	1	1	1	1	1	1	1	1	1	1	1	1	1	1	1	1	1	1	1	1	1	1	607	13.4%		
15	1	1	1	1	1	1	1	1	1	1	1	1	1	1	1	1	1	1	1	1	1	1	1	1	1	1	1	1	1	1	1	1033	18.0%		
16	1	1	1	1	1	1	1	1	1	1	1	1	1	1	1	1	1	1	1	1	1	1	1	1	1	1	1	1	1	1	1	1056	18.6%		
17	1	1	1	1	1	1	1	1	1	1	1	1	1	1	1	1	1	1	1	1	1	1	1	1	1	1	1	1	1	1	1	874	14.6%		
18	1	1	1	1	1	1	1	1	1	1	1	1	1	1	1	1	1	1	1	1	1	1	1	1	1	1	1	1	1	1	1	603	10.6%		
19	1	1	1	1	1	1	1	1	1	1	1	1	1	1	1	1	1	1	1	1	1	1	1	1	1	1	1	1	1	1	1	803	10.6%		
20	1	1	1	1	1	1	1	1	1	1	1	1	1	1	1	1	1	1	1	1	1	1	1	1	1	1	1	1	1	1	1	517	8.9%		
21	1	1	1	1	1	1	1	1	1	1	1	1	1	1	1	1	1	1	1	1	1	1	1	1	1	1	1	1	1	1	1	287	4.9%		
22	1	1	1	1	1	1	1	1	1	1	1	1	1	1	1	1	1	1	1	1	1	1	1	1	1	1	1	1	1	1	1	117	1.9%		
23	1	1	1	1	1	1	1	1	1	1	1	1	1	1	1	1	1	1	1	1	1	1	1	1	1	1	1	1	1	1	1	36	0.6%		
24	1	1	1	1	1	1	1	1	1	1	1	1	1	1	1	1	1	1	1	1	1	1	1	1	1	1	1	1	1	1	1	8	0.1%		
25	1	1	1	1	1	1	1	1	1	1	1	1	1	1	1	1	1	1	1	1	1	1	1	1	1	1	1	1	1	1	1	2	0.0%		
26	1	1	1	1	1	1	1	1	1	1	1	1	1	1	1	1	1	1	1	1	1	1	1	1	1	1	1	1	1	1	1	4	0.6%		
27	1	1	1	1	1	1	1	1	1	1	1	1	1	1	1	1	1	1	1	1	1	1	1	1	1	1	1	1	1	1	1	1	1	4	0.6%
Total No. Measured	17	39	210	144	111	215	144	112	189	256	185	152	145	289	126	221	186	150	183	185	129	159	202	164	246	372	110	364	180	382	224	6,002	100.0%		
Total Length	255	602	3,169	2,275	1,694	3,246	2,165	1,739	3,092	3,931	2,831	2,315	2,243	4,440	1,982	3,524	2,913	2,300	2,964	2,969	2,117	2,555	3,274	2,575	3,765	5,817	1,746	5,542	3,168	2,842	5,660	3,434	83,242		
Average Length	15.0	15.2	15.8	15.3	15.1	15.1	15.0	15.3	15.2	15.4	15.6	15.2	15.5	15.7	15.7	15.9	15.7	15.5	15.4	16.1	16.4	16.1	16.2	15.7	15.3	15.6	15.8	15.9	16.1	15.6	15.0	15.3	15.6		
Total No. Spurred	21	38	275	167	113	219	147	136	201	261	187	160	145	290	128	221	200	153	186	187	135	159	204	164	282	373	112	354	206	408	242	6,264			
Percent Measured	81.0%	100.0%	76.4%	82.2%	86.2%	86.0%	86.0%	85.4%	86.5%	86.1%	86.9%	95.8%	95.6%	100.0%	100.0%	99.0%	99.0%	98.0%	89.5%	96.9%	95.8%	100.0%	99.0%	99.0%	100.0%	99.7%	99.5%	100.0%	96.1%	89.6%	96.1%	92.8%	95.6%		

Appendix 1. Number of northern pike per 1-inch group taken during spring spearing seasons from 1985 - 2016.

Inch Group	Number of northern pike in:																																Percent of Total			
	1985	1986	1987	1988	1989	1990	1991	1992	1993	1994	1995	1996	1997	1998	1999	2000	2001	2002	2003	2004	2005	2006	2007	2008	2009	2010	2011	2012	2013	2014	2015	2016				
10																																			0	0.0%
11																																			2	0.1%
12																																			3	0.4%
13																																			3	0.3%
14																																			3	0.3%
15																																			5	0.4%
16																																			5	0.5%
17																																			16	1.6%
18																																			28	3.0%
19																																			44	3.0%
20																																			57	5.1%
21																																			57	5.0%
22																																			68	7.0%
23																																			72	6.1%
24																																			72	6.9%
25																																			63	5.9%
26																																			57	6.0%
27																																			51	4.7%
28																																			65	6.0%
29																																			70	6.1%
30																																			48	4.1%
31																																			42	3.4%
32																																			55	4.6%
33																																			44	3.7%
34																																			44	4.1%
35																																			37	3.0%
36																																			23	2.2%
37																																			14	1.4%
38																																			23	2.3%
39																																			12	1.2%
40																																			15	1.5%
41																																			3	0.3%
42																																			0	0.0%
43																																			0	0.0%
44																																			3	0.4%
Total No. Measured	0	12	28	45	14	32	40	18	19	29	28	26	35	51	23	54	32	39	21	20	20	16	54	23	49	50	28	71	39	42	78	59	1,105	100.0%		
Total Length		312	724	1,152	334	776	968	453	527	792	744	883	887	1,680	593	1,457	979	1,089	639	573	567	465	1,542	621	1,400	1,373	810	1,898	1,054	1,155	2,183	1,569	30,164			
Average Length	NA	26.0	25.9	25.6	23.9	24.2	24.6	25.2	27.7	27.3	26.6	26.7	28.2	27.2	25.3	27.0	30.6	30.5	30.4	28.6	28.3	28.1	28.6	27.0	28.6	27.5	28.9	26.7	27.0	27.5	28.0	28.4	27.3			
Total No. Spared	2	13	41	59	14	34	41	30	19	30	32	30	37	68	28	54	32	40	22	20	22	17	54	23	49	50	30	71	38	50	78	62	1,182			
Percent Measured	0.0%	82.3%	68.3%	76.3%	100.0%	84.1%	97.6%	80.0%	100.0%	98.7%	87.5%	66.7%	94.6%	89.7%	79.3%	100.0%	100.0%	97.5%	95.5%	100.0%	90.9%	94.1%	100.0%	100.0%	100.0%	100.0%	90.8%	100.0%	100.0%	94.0%	100.0%	95.2%	82.7%			